

Star CUPS Driver

Software Manual

for macOS

Supported Models

- Thermal Printers***
- Portable Printers***
- Dot Matrix Printers***
- Kiosk Printers***

Notice

- All company and product names are trademarks or registered trademarks of their respective owners.
(<https://www.star-m.jp/eng/trademarks.html>)
- Reproduction of any part of this documentation is prohibited.
- The contents of this documentation are subject to change without notice.
- We can assume no responsibility for any results which may come out of the usage instructed in this documentation.

Table of Contents

1. Installation/Uninstallation Procedures	8
1.1 Installing Star CUPS Drivers.....	8
1.2 Registering the Printer	12
1.3 Uninstalling Star CUPS Drivers	20
2. Setting Printer Functions.....	23
2.1 Function List.....	24
3. Setting the Paper Size.....	43
3.1 Setting the Paper Size.....	43
3.2 Settable Paper Sizes.....	44
3.3 Custom Paper Sizes	47
4. Guidelines for Using an Ethernet Environment	48
4.1 Setting a Temporary IP Address.....	48
4.2 Setting the IP Address << StarPrinter TELNET Utility >>	50
5. Guidelines for Using the lpr Command	53
5.1 Function List.....	54
6. Confirmed Operating Environments	62
7. Revision History	63

Introduction

This manual describes the setup procedures and the functional outline of the Star CUPS driver which use Star Printers.

The printer's IP address must be set in advance to use a printer that supports LAN using this driver. If your LAN environment does not allow acquisition of an IP address from a DHCP server, set the IP address to the printer in advance. See 4. Guidelines for Using an Ethernet Environment for details on how to set the IP address for the printer.

This software dose not support ESC/POS emulation.

Operating Environment

| Operating System

- ◆ macOS 13
- ◆ macOS 12
- ◆ macOS 11
- ◆ Mac OS X 10.15
- ◆ Mac OS X 10.14

Supported processors : Apple silicon/intel

Target Model and Firmware Versions

Thermal Printers

Target Model	Interface	Printer Firmware Version
TSP100IIIU, TSP100IIIU series	USB	Ver 1.0 or later
TSP100IIILAN, TSP100IIIW series	Ethernet	Ver 1.0 or later
TSP100IIIBI series	Bluetooth	Ver 1.0 or later
TSP100IV series	USB / Ethernet	Ver 1.0 or later
TSP650II series	USB / Ethernet / Bluetooth	Ver 1.0 or later
TSP700II series	USB / Ethernet / Bluetooth	Ver 5.0 or later
TSP800II series	USB / Ethernet / Bluetooth	Ver 2.0 or later
mPOP series	USB/ Bluetooth	Ver 1.0.1 or later (POP10) Ver 4.0.0 or later (POP10CI) Ver 5.0.0 or later (POP10CBI)
mC-Print3 series	USB / Ethernet / Bluetooth	Ver 1.0 or later (MCP31LB and MCP31L) Ver 2.0 or later (MCP30) Ver 3.0 or later (MCP31CB and MCP31C) Ver 5.0 or later (MCP31CBI and MCP31CI)
mC-Print2 series	USB / Ethernet / Bluetooth	Ver 1.0 or later
mC-Label3 series	USB / Bluetooth	Ver 1.0 or later
BSC10II series* ¹	USB / Ethernet	Ver. 3.0 or later

*¹ This is only available in "Standard Mode".

Please check the "Operation Mode" of the self-printing (turn on the power while pressing the Feed button).

If you are using a different mode, please contact the seller.

Portable Printers

Target Model	Interface	Printer Firmware Version
SM-L200 series	USB* ¹ / Bluetooth	Ver 1.0 or later
SM-L300 series	USB / Bluetooth	Ver 1.0 or later
SM-S230i series	USB / Bluetooth	Ver 1.0 or later
SM-T300i series	Bluetooth	Ver 3.0 or later
SM-T400i series	Bluetooth	Ver 3.0 or later

*¹ USB communication will be supported with firmware version 2.0 or later.

Dot Matrix Printers

Target Model	Interface	Printer Firmware Version
SP700 Series	USB / Ethernet / Bluetooth	Ver 4.0 or later

Kiosk Printers

Target Model	Interface	Printer Firmware Version
SK1-211/221 series	USB	Ver 1.1 or later
SK1-211/221 Presenter series	USB	Ver 1.1 or later
SK1-311/321 series	USB	Ver 1.1 or later
SK1-311 Presenter series	USB	Ver 1.1 or later
SK1-41 series	USB	Ver 1.0 or later
SK1-41 Presenter series	USB	Ver 1.0 or later
SK5-31 Presenter series	USB / Ethernet	Ver 1.0 or later

| When using a Bluetooth® Interface

- The communication of Bluetooth interface is "SPP".
- The maximum page length printable by Bluetooth printers is 1500 mm.

| When using a USB Interface

If the printer status display does not come back from offline even though the printer is online, please try either of the following procedures.

Procedure 1

1. Disconnect the USB cable from the PC.
 2. Execute printing.
 3. Connect the USB cable to the PC.
Confirm the printer status display is online after printing.
- * The same applies if you turn off and on the printer instead of unplugging and plugging the USB cable from the PC.

Procedure 2

1. Open your favorite web browser and navigate to "http://localhost:631/admin".
* When accessing the CUPS management screen for the first time, you cannot access it as the web interface is disabled.
Please refer to Page. 16 "When accessing the CUPS management screen for the first time" for how to enable it.
2. Click the "Printers" tab, and then click the target printer.
3. Select the "Set Default Options".
4. Click the "Set Default Options" button.
Confirm the printer status display is online.

| When using the Kiosk Printers

This is software of StarPRNT emulation exclusive use. To use the StarPRNT emulation, use the printer with "StarPRNT".

Simple method of switching over between ESC/POS and StarPRNT emulation modes

SK1 series and SK1 Presenter series

1. In condition the power is off, the power should be turned on while pushing FEED/SELECT button opening the paper cover.
2. Green and Red LEDs are turned off.
3. StarPRNT emulation ⇒ Green LED is turned on in case of ESC/POS emulation switching.
4. ESC/POS emulation ⇒ Red LED is turned on in case of StarPRNT emulation switching.
5. When FEED button and SELECT button are released, the printer is initialized and operated with the selected emulation.

SK5 Presenter series

1. While pressing the FEED/SELECT buttons, turn on the power switch.
2. When the LED lights up and printing starts, release the button.
3. "Select Emulation" and emulation currently set is printed.
4. To make a change, press down the SELECT button. It returns to 3.
5. To decide the emulation, press down FEED button. It advances to 6.
6. The current setting contents are printed.

| When using SM-S230i, SM-T300i and SM-T400i

If you are using SM-S230i, SM-T300i or SM-T400i, make the following two settings before using.

1. Emulation settings
2. Communication mode setting

1. Emulation settings

This is software of StarPRNT emulation exclusive use.

To use the StarPRNT emulation, use the printer with "StarPRNT".

☆ Simple method of switching over between ESC/POS and StarPRNT emulation modes

1. Turn the printer power and open the printer cover.
2. Press and hold the POWER button and the FEED button simultaneously. As soon as the ERROR lamp flashes five times, release the buttons. The emulation switchover takes place automatically.
3. After setting a paper, close the printer cover. The set emulation mode is printed out.
ESC/POS mode: EMU = ESC/POS
StarPRNT mode: EMU = StarPRNT
If the emulation mode is not switched correctly, repeat the above steps 1 to 3.
At that time, in step 2, make sure not to release the buttons until the lamp completes the 5th flash.
4. Please reboot the printer after switching the emulation between StarPRNT and ESC/POS.
*It will be valid after rebooting the printer.

2. Communication mode setting

Please set the communication mode of the printer as follows.

F/W Version 3.X	Bluetooth
F/W Version 4.0 or later	Bluetooth(Mac)

☆ Simple method of switching the communication modes

<Bluetooth (Mac) ⇔ Bluetooth(Auto)>, <Bluetooth ⇔ Bluetooth(iAP)>

Press and hold the MODE button and the FEED button for at least five seconds until ERROR LED flashes five times. Continuously hold down the MODE button and the FEED button even until the buzzer sounds twice. The Bluetooth communication mode switches.

1. Installation/Uninstallation Procedures

Cautions :

- The account with administrative privilege for the PC should install/uninstall this driver.
- You will need to restart your computer when the installation has finished. Please close all running applications before starting the installation.

1.1 Installing Star CUPS Drivers

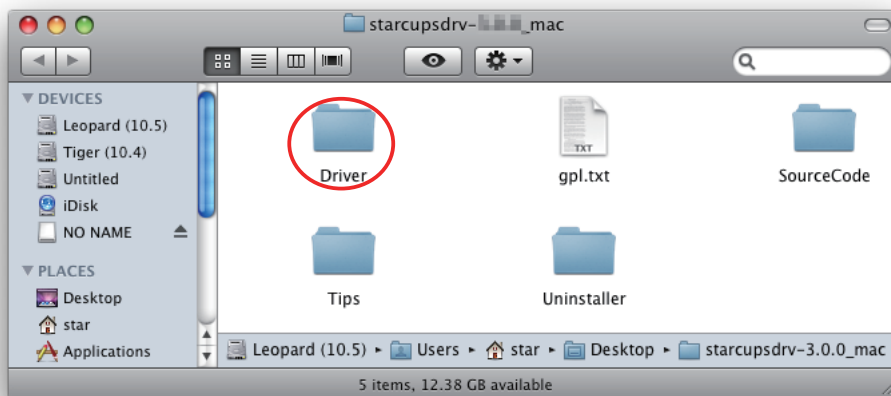
To install the driver, proceed as follows.

Important : When using a USB interface, turn on the printer's power after performing "1.1 Installing Star CUPS Drivers".

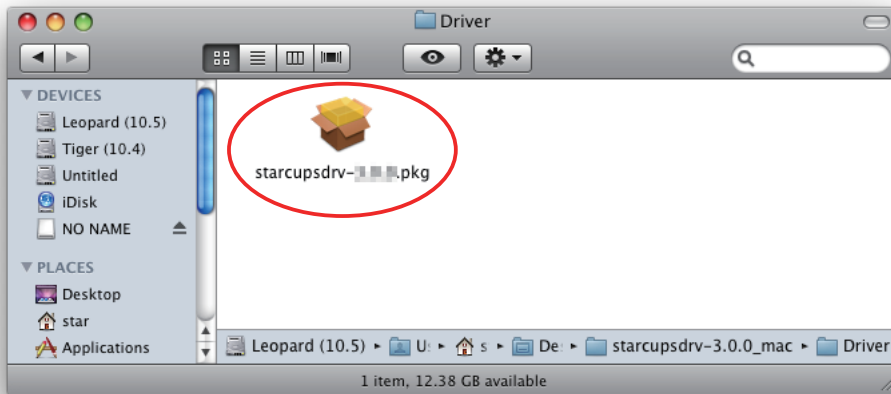
1. Place the "starcupsdrv-x.xx.x_mac_yyyymmdd.zip" file on your desktop and expand it by double-clicking on the file.



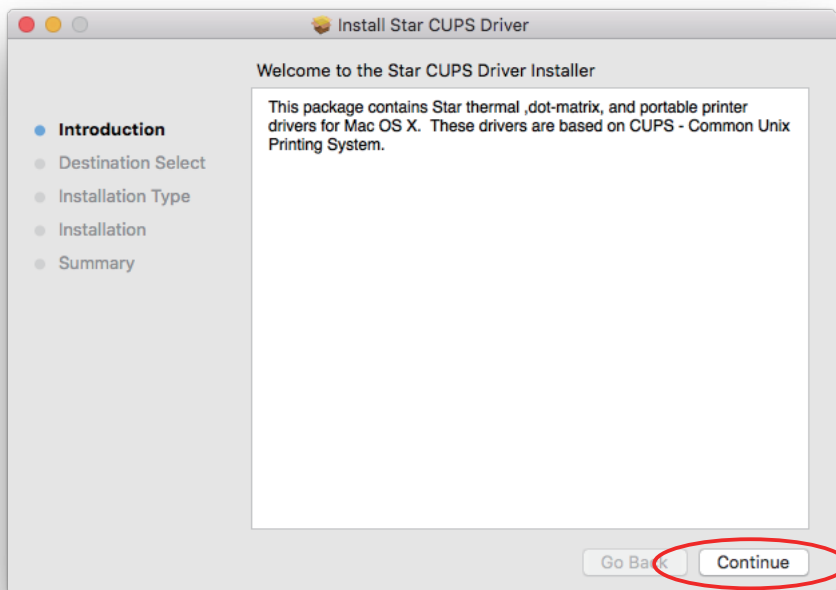
2. The screen below appears by double-clicking the expanded <starcupsdrv-x.xx.x_mac> file. Click on the "Driver" folder to open it.



- The screen below is displayed.
Double-click <starcupsdrv-x.xx.x.pkg> to begin the installation.



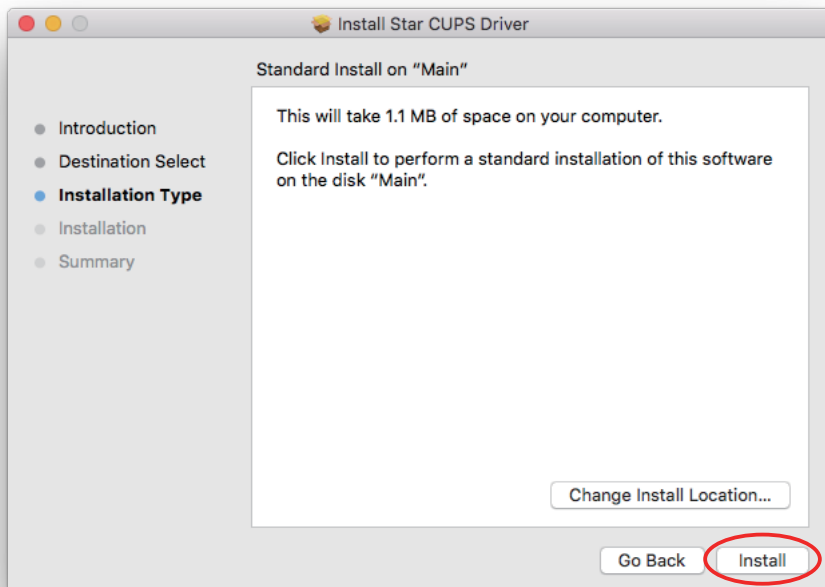
- The following window is displayed.
Click [Continue].



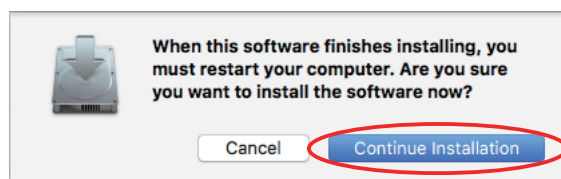
5. Select the harddisk to install with the program, then click [Continue].



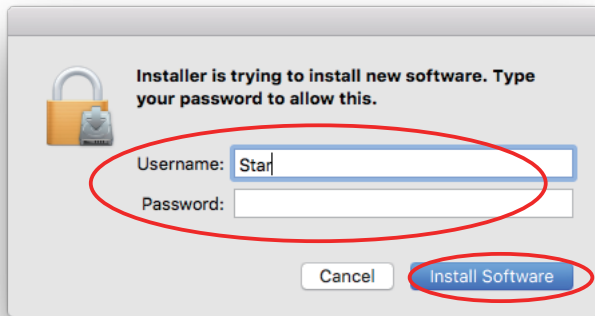
6. Click [Install] to start the installation.



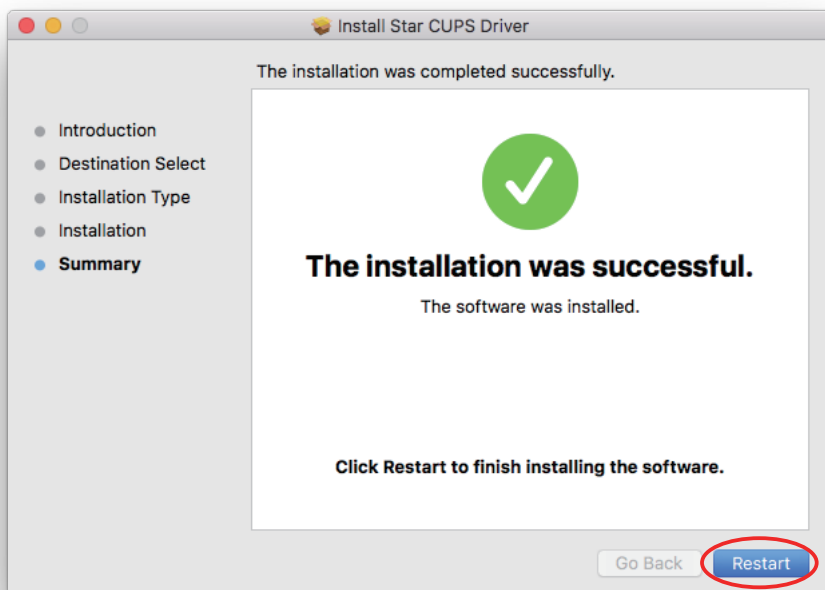
7. A confirmation message appears indicating that you need to restart your computer after the installation. If there is no problem, click [Continue installation].



8. If the confirmation window shown below is displayed, enter the user name and password having administrator rights, then click [Install Software].



9. The installation ends successfully.
Please click [Restart] and restart your computer.

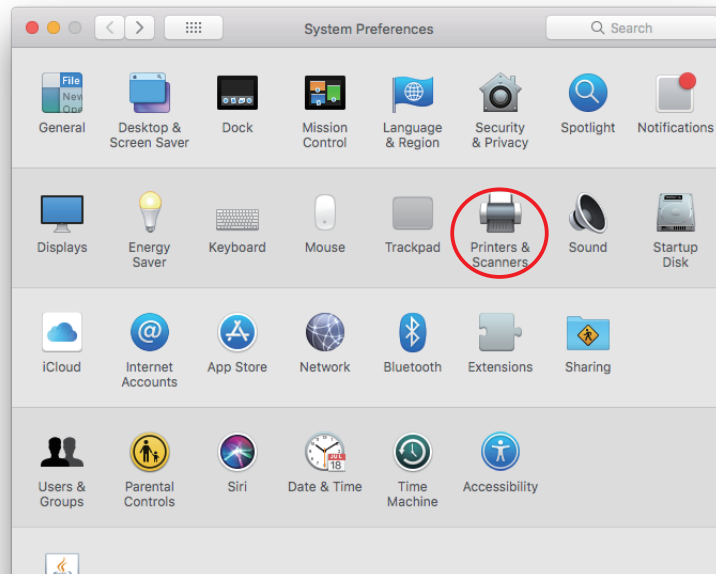


1.2 Registering the Printer

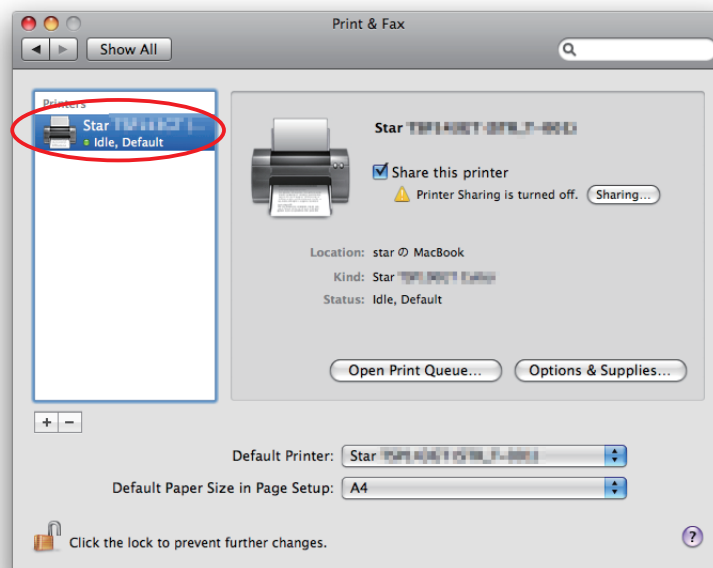
Procedures for registering the printer differ according to the type of interface you use. See the page relating to your environment.

1.2.1 When using a USB Interface

1. In the Apple mark in the menu bar, open [System Preferences] and click on the [Printers & Scanners] icon.



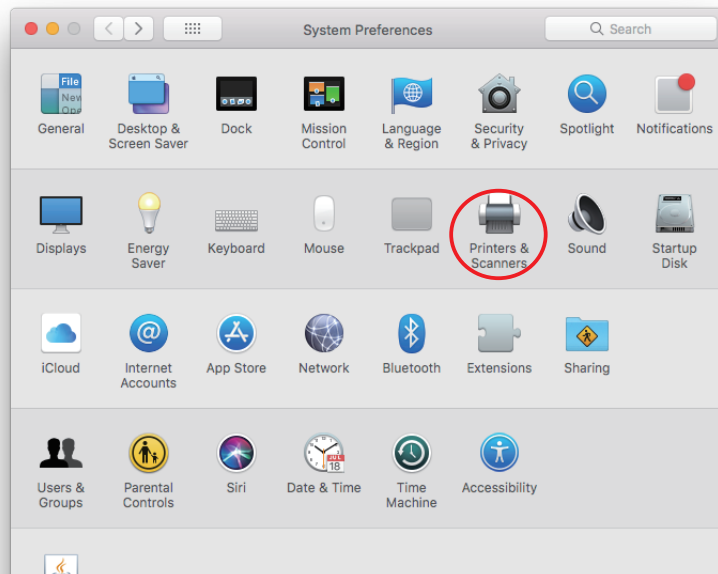
2. Connect the printer, and then turn on the printer's power switch. The Plug and Play feature detects the connection of the printer hardware and automatically installs the driver software.
3. If the name of the specified printer is added to the printer list, the printer has been added.



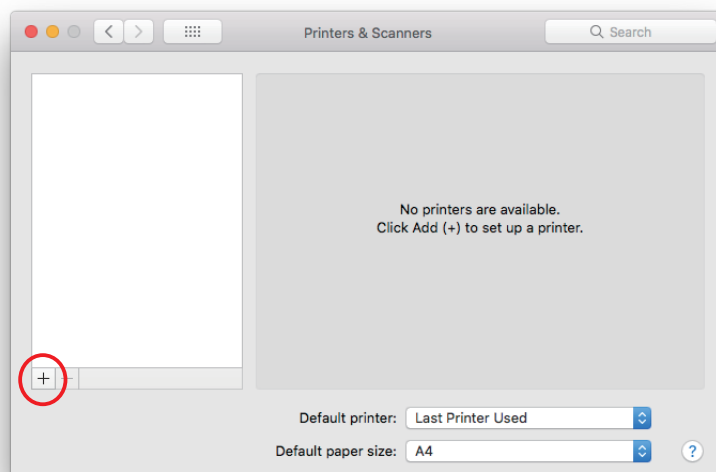
1.2.2 When using Ethernet Interface

Note: When using IFBD-HI01X, LPR must be set Enable from WebUI.
Please refer to the "Set-up Manual for IFBD-HI01X" for details.

1. In the Apple mark in the menu bar, open [System Preferences] and click on the [Printers & Scanners] icon.



2. The Print & Fax window appears.
Click on [+].

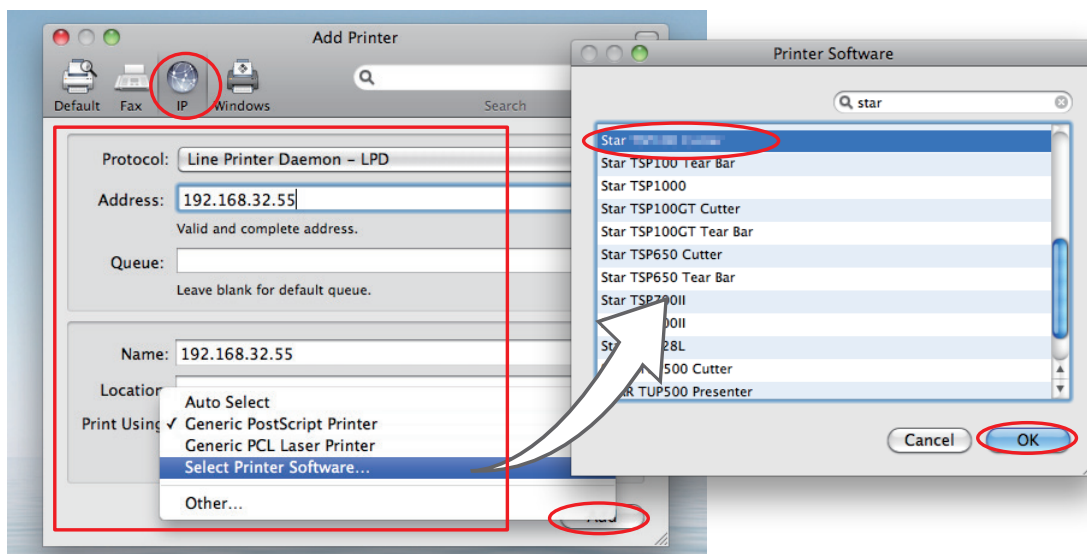


3. From the "IP", make the following settings and click on [Add].

- Protocol: Line Printer Daemon - LPD
 Address: IP address of printer being set (Check in self-print)
 Queue: Any character string (Printer cannot be used if left blank.)
 Name: Any character string (The IP address is automatically input by default.)
 Print Using: "Select the driver to use..." or "Select printer software..."
 Select the driver to use.

Point! The correspondence table for printer models and drivers is shown below.

Series	Model	Driver
TSP100 series	TSP143IIIW, TSP143IIILAN, TSP143IV-UE, TSP143IV-UE SK	Star TSP100 Cutter (en)
TSP650II series	TSP654II	Star TSP650 Cutter (en)
TSP700II series	TSP743II	Star TSP700II (en)
TSP800II series	TSP847II	Star TSP800II (en)
mC-Print3 series	MCP30	Star MCP30 (en)
	MCP31CI, MCP31CBI, MCP31L, MCP31LB, MCP31C, MCP31CB	Star MCP31 (en)
mC-Print2 series	MCP20, MCP20B	Star MCP20 (en)
	MCP21LB	Star MCP21 (en)
BSC10II series	BSC10II-UE	Star BSC10II (en)
SP700 series	SP742	Star SP700 Cutter (SP742) (en)
	SP747	Star SP700 Cutter (SP747) (en)
	SP712	Star SP700 Tear Bar (SP712) (en)
	SP717	Star SP700 Tear Bar (SP717) (en)
SK5-31 Presenter series	SK5-31 Presenter	STAR Sanei SK5-31 Presenter (en)

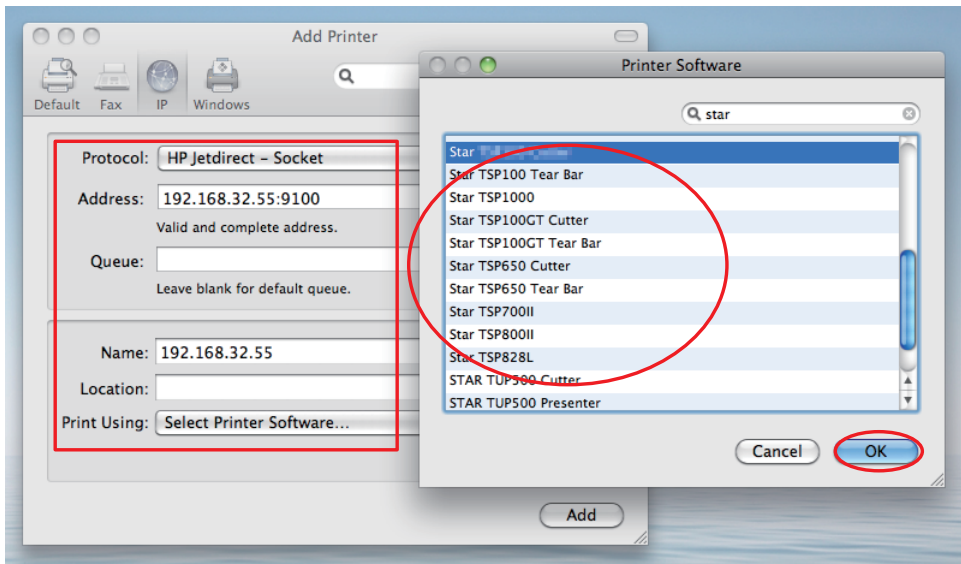


Point! When using port 9100, set the following.

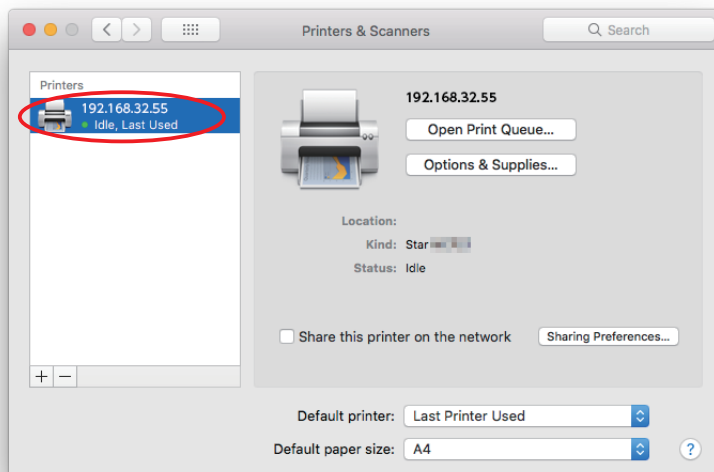
Protocol: HP Jet Direct - Socket

Address: [IP address of printer being set] : 9100


Print Using: "Select the driver to use..." or "Select printer software..."
Select the driver to use.



4. If the name of the specified printer is added to the printer list, the printer has been added.



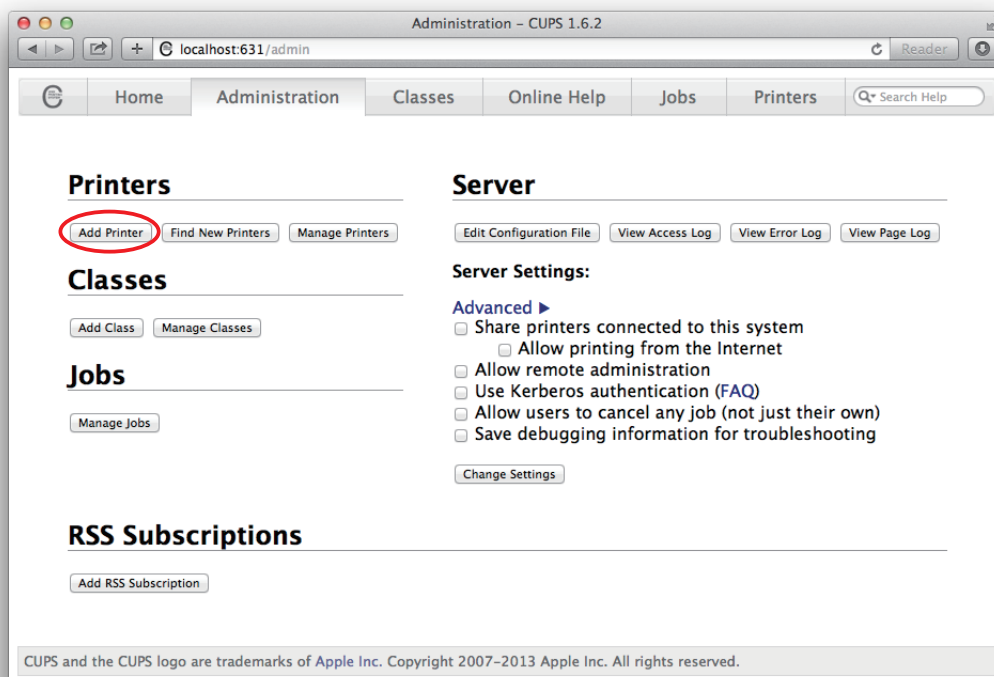
1.2.3 With the Bluetooth Interface

1. To pair them with the bluetooth printer, proceed as follows.
 - 1) Turn the printer power ON.
 - 2) **When using TSP650II, TSP700II, TSP800II and SP700**
Hold down the PAIR button of the bluetooth card for more than 10 seconds to set the pairing mode of the printer.
 - 3) Click Bluetooth icon , and select "Set up new device". When click "Forward", the system find the printer.
 - 4) Select the printer which is displayed in the Serch panel, and click "Continue".
When using the thermal printers and the dot matrix printers
The system start the pairing. the pairing is unsuccessful, please try again.
 - 5) **When using the portable printers**
Click [Passcode Option], and enter Passcode (PIN code) of printer and click [OK]. The system start the pairing. If the pairing is unsuccessful, please try again.
2. Open your favorite web browser and navigate to "http://localhost:631/admin".

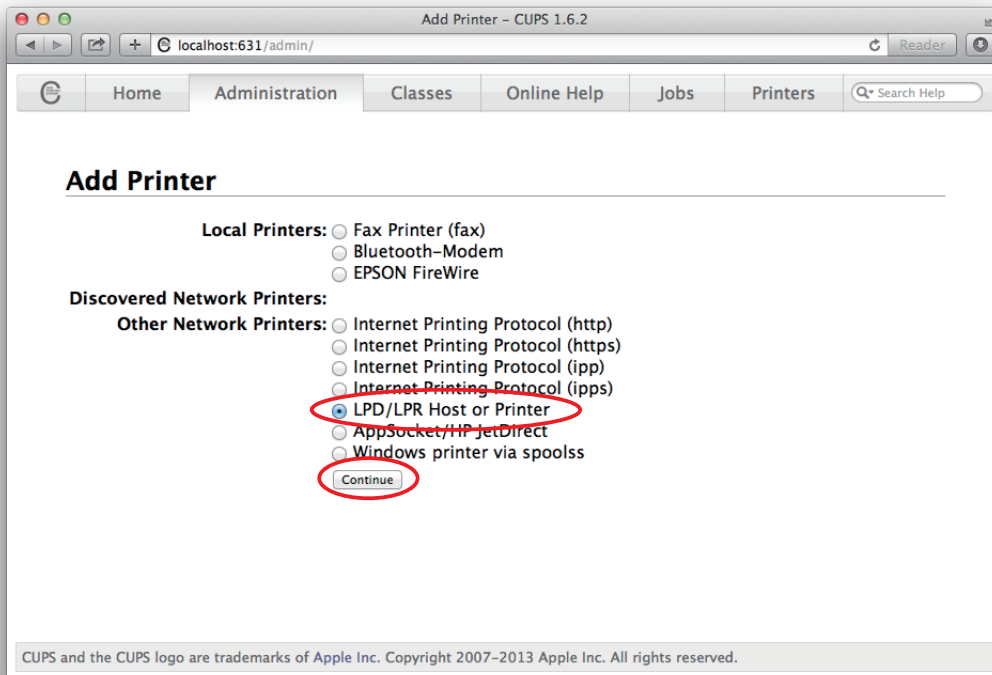
Point! When accessing the CUPS management screen for the first time, you cannot access it as the web interface is disabled.
Please execute the command as below from [Utility]-[Terminal].

```
cupscctl WebInterface=yes
```

3. Click "Add Printer".
Note: When a dialog box is displayed requesting certification, enter the root password and press [Yes].



4. Select the "LPD/LPR Host or Printer". Then click "Continue".

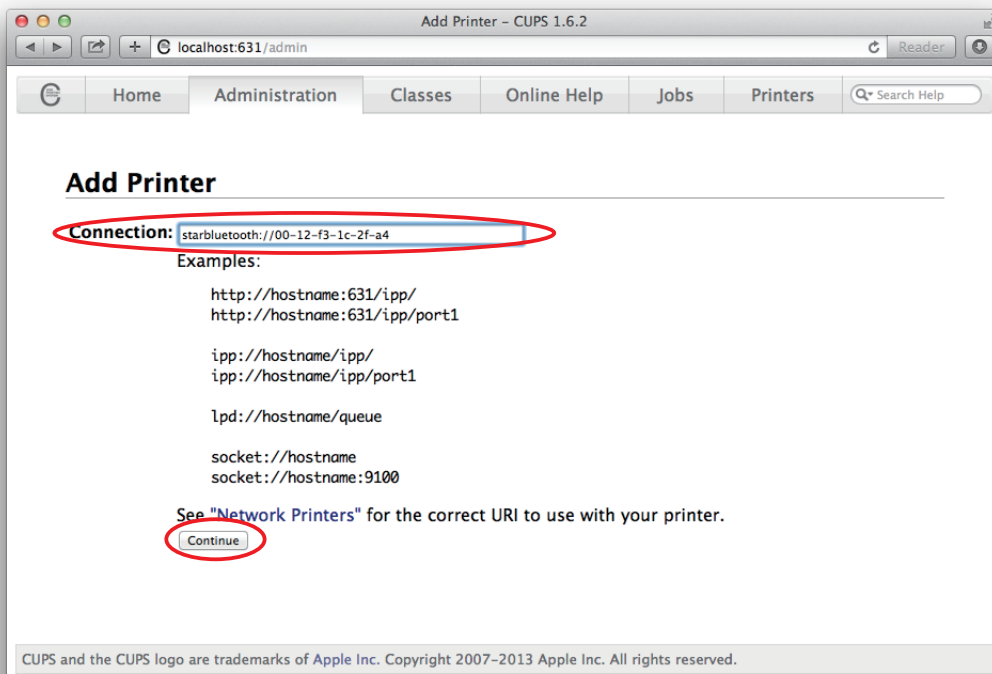


5. Specify the device URI for the printer as shown below and click "Continue".

starbluetooth://<<Bluetooth Address>>

ex. starbluetooth://00-12-f3-1c-2f-a4

* For Potable Printer, 'starmobilebluetooth' can also be used.

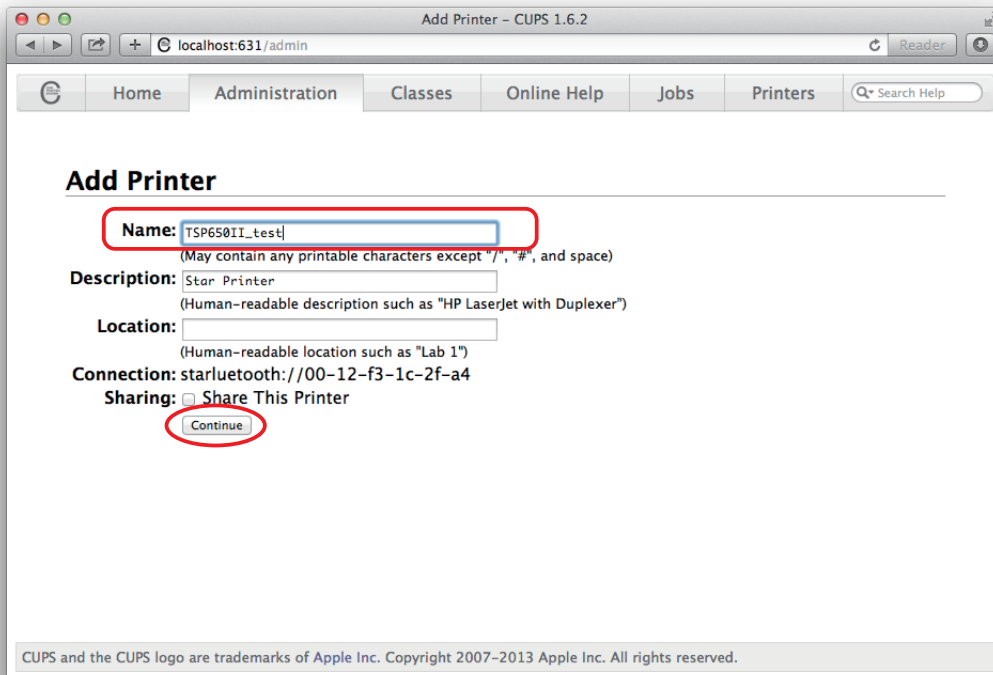


Point!

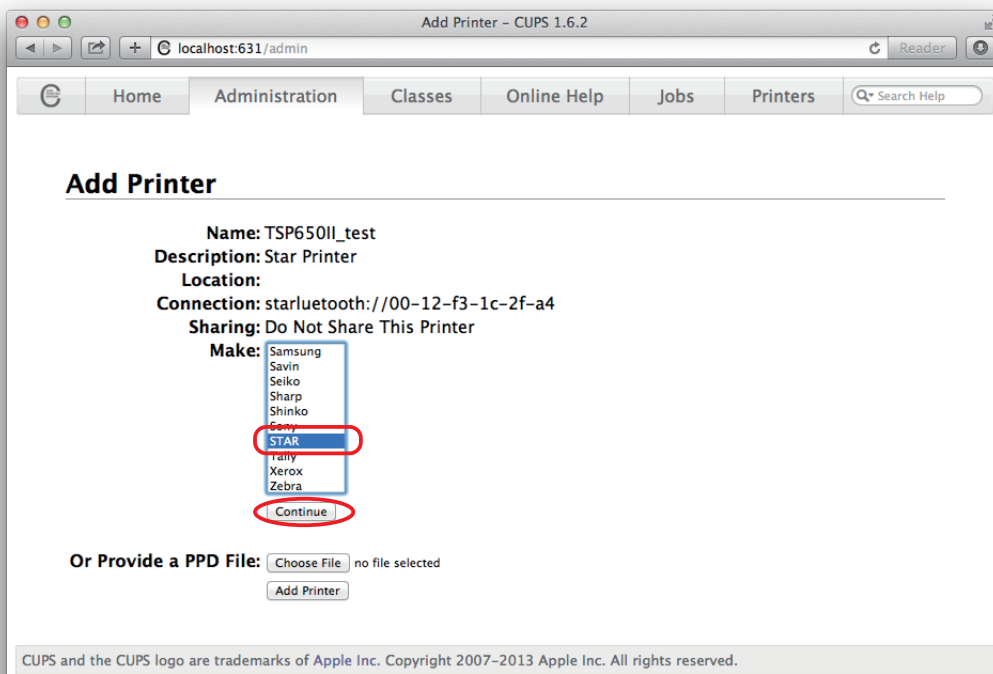
The Bluetooth address is included in the Bluetooth information printed by self-print (by powering on while pressing the Feed button*).

* When using SP700: When the buzzer sounds once, release the FEED button.

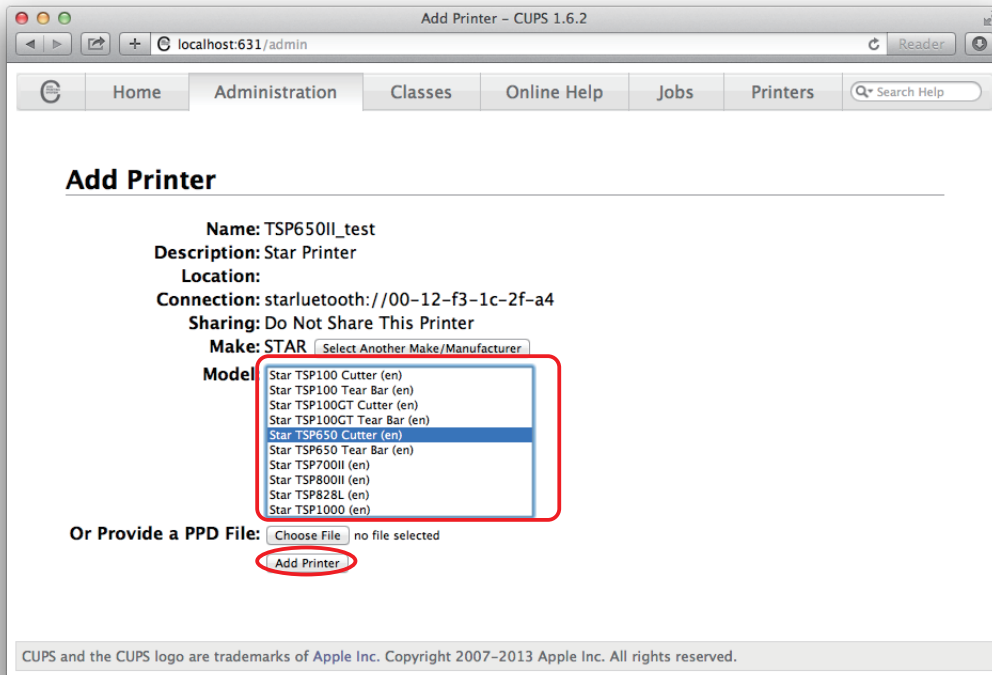
- In the Add Printer screen, enter the printer name, location and description. Then click "Continue". Location and Description can be left blank.



- Select "STAR" as the Make. Then click "Continue".



8. Select the printer model. Then click "Add Printer".



Point! The correspondence table for printer models and drivers is shown below.

Series	Model	Driver
TSP100 series	TSP143IIIBI	Star TSP100 Cutter (en)
TSP650II series	TSP654II	Star TSP650 Cutter (en)
TSP700II series	TSP743II	Star TSP700II (en)
TSP800II series	TSP847II	Star TSP800II (en)
mPOP series	POP10, POP10CBI	Star POP10 (en)
mC-Print3 series	MCP31CBI, MCP31LB, MCP31CB	Star MCP31 (en)
mC-Print2 series	MCP20B	Star MCP20 (en)
	MCP21LB	Star MCP21 (en)
mC-Label3 series	MCL32CBI	Star MCL32 (en)
SM-L200 series	SM-L200	Star SM-L200 (en)
SM-L300 series	SM-L300	Star SM-L300 (en)
	SM-L304	Star SM-L304 (en)
SM-S230i series	SM-S230i	Star SM-S230i (en)
SM-T300i series	SM-T300i	Star SM-T300i (en)
SM-T400i series	SM-T400i	Star SM-T400i (en)
SP700 series	SP742	Star SP700 Cutter (SP742) (en)

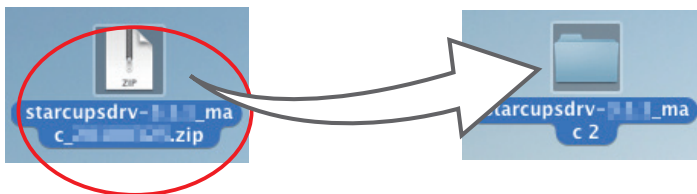
This completes the bluetooth printer installation and registration.

1.3 Uninstalling Star CUPS Drivers

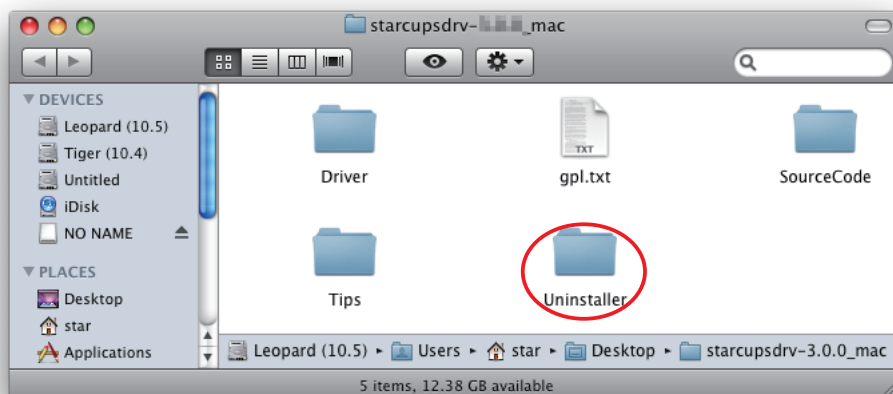
To uninstall the driver, proceed as follows.

Important : When you uninstall the Star CUPS Driver, all drivers for Star Printers installed on your Macintosh computer are deleted.
The setting file for Star Micronics Cloud Application installed at the same time is deleted as well.

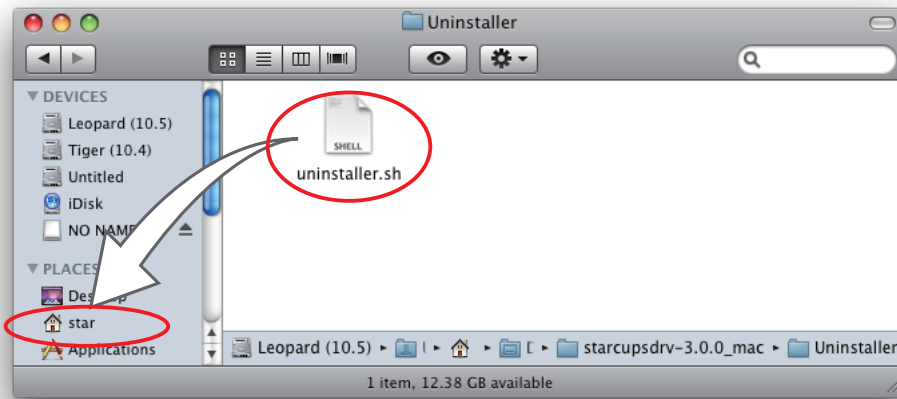
1. Turn off the power switch of the Printer.
2. Double-click [starcupsdrv-x.xx.x_mac_yyyymmdd.zip] you copied to your desktop to decompress it.



3. The screen below appears by double-clicking the expanded <starcupsdrv-x.xx.x_mac> file. Click on the "Uninstaller" folder to open it.



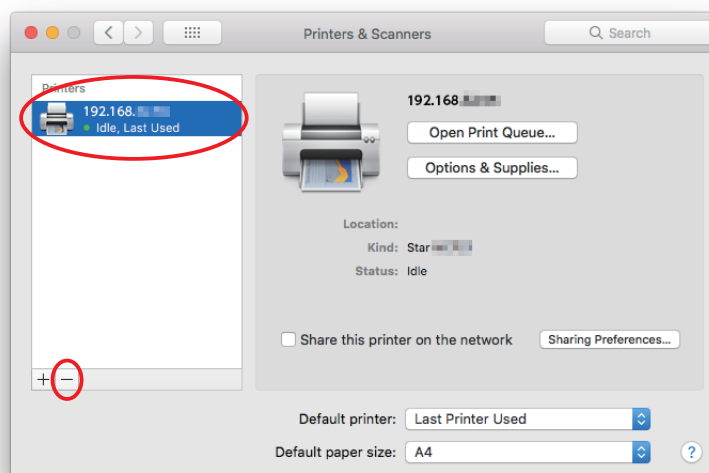
- Copy "uninstaller.sh" to your home directory.



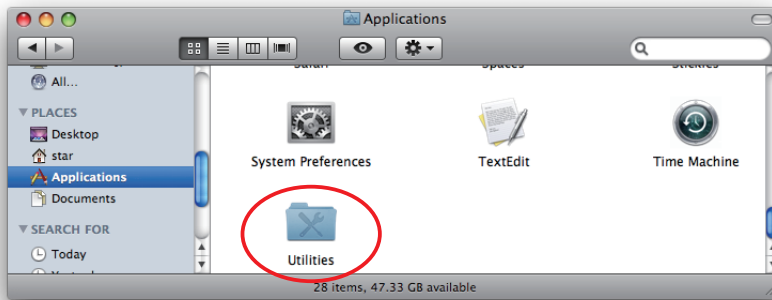
- In the Apple mark in the menu bar, open [System Preferences] and click on the [Printers & Scanners] icon.



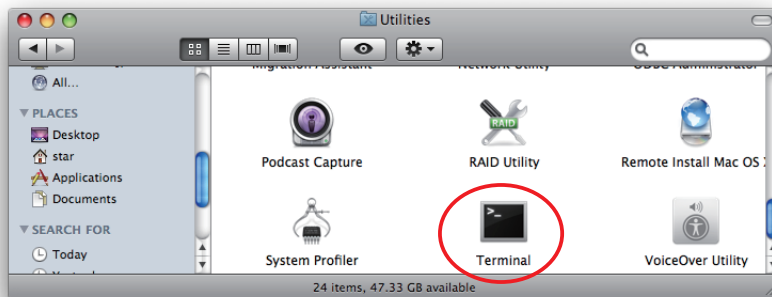
- Delete the entire Star printer queue from the printers list.



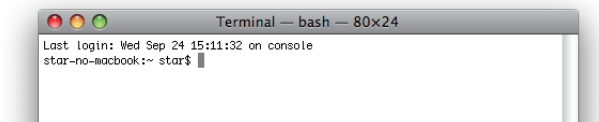
- Startup the Finder from the Mac OS X Dock and click [Applications] - [Utilities].



- Click on [Terminal].

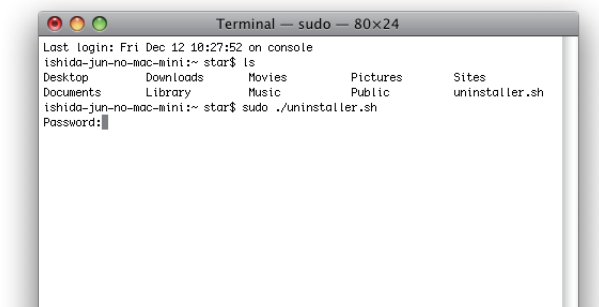


- The terminal starts up.



- Uninstall the Star Printer Driver by running the following command on your terminal. When starting up, you will be prompted to input your user password.

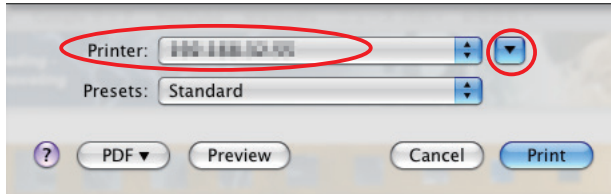
```
sudo ./uninstaller.sh
```



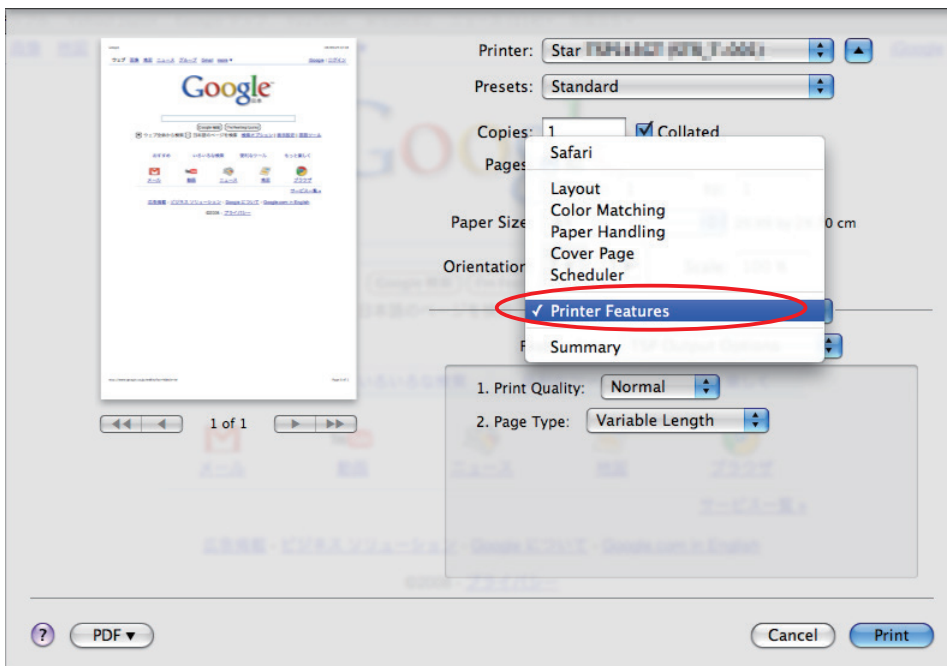
2. Setting Printer Functions

Use the dialog box opened by [File] -> [Print] in the Mac OS X menu.

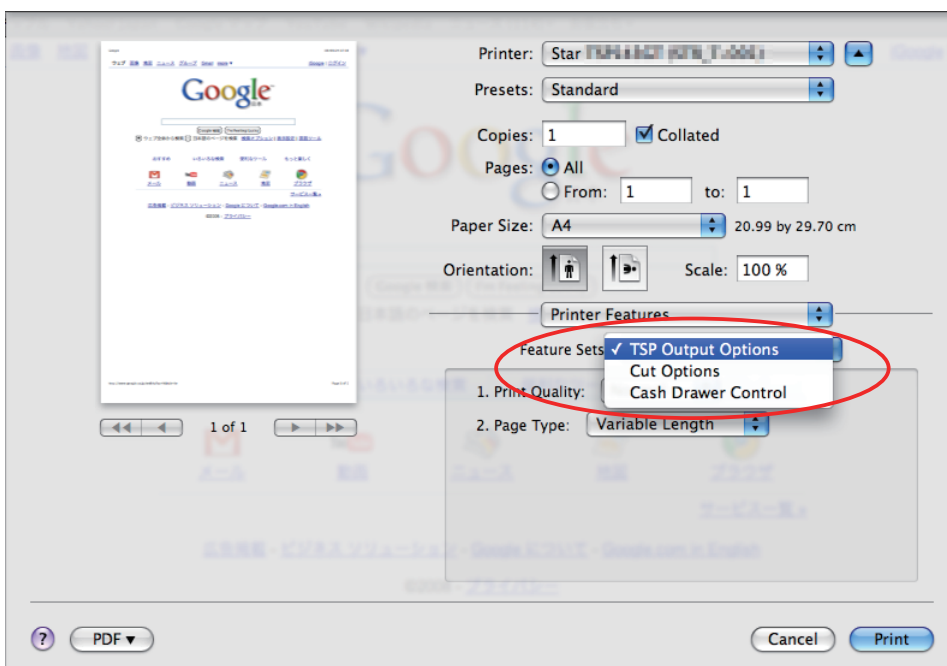
From the "Printer:" pull-down menu, select the printer name to set, then click [▼] to display the details.



Select "Printer Features" from the setting pull-down menu.



"Feature Sets:" Customizes printer operation.



2.1 Function List

Depending on the printer that you select, the functions that are displayed may differ, and only the ones displayed can be set. Refer to the function guide for details.

2.1.1 Thermal Printers

Output Options

• Print Speed:

Sets the print speed. Note that the setting also affects the print quality.

Setting	Default	Details
High	✓	Print speed has priority over quality.
Middle *		Print quality and speed are in the middle.
Low		Best quality, but slow print speed.

* Not supported by the mPOP series.

Point! This function is supported by the TSP100, TSP650II, TSP700II, TSP800II, mPOP, mC-Print3 and mC-Label3 series.

• Print Density:

Sets the printing density.

Setting	Default	Details
-3 to -1 *		Larger value with -(minus) makes print density lighter.
Standard	✓	Prints with normal density.
+1 to +3 or +4		Larger value with +(plus) makes print density darker.

* Not supported by the mPOP and mC-Print2 series.

Point! This function is supported by the TSP100, TSP650II, mPOP, mC-Print3, mC-Print2, mC-Label3 and BSC10II series.

• Page Type:

Sets the page type.

Setting	Default	Details
Variable Length	✓	Does not output blank data until the bottom of the page. Receipt ends after final data is printed.
Fixed Length		Outputs blank data as a blank until the bottom of the page. Receipt ends after printing the length specified by paper size.
Black Mark *		Outputs blank data as a blank until the black mark. Receipt ends after the black mark is detected.
Label(Gap) *		If you want the printer to feed paper until the head of the label detected by the transmission sensor.

* This setting value is not supported depending on the model.

• Top Search:

Selects whether the printer executes a reverse-feed before print.

Setting	Default	Details
Disable	✓	No reverse-feed before print.
Enable		Executes reverse-feed before print.

Point! This function is supported by TSP700II and TSP800II series.

Note: This function is available only when the **Cut Options** setting is configured to 'Full Cut'.
The function is not available when 'PartialCut' is selected.

• Top Margin:

Selects whether the printer executes a reverse-feed before print.

Setting	Default	Details
Disable	✓ ^{*1}	No reverse-feed before print. The default margins (11 mm) are applied.
2mm to 10mm ^{*3}		Set the margin from the cut position to the print start position.
3mm	✓ ^{*2}	Set the margin from the cut position to the print start position to 3mm.

*1 mC-Print3 series *2 mC-Label3 series *3 Not supported by the mC-Label3 series

Point! This function is supported by MCP31L, MCP31LB, MCP31C, MCP31CB and mC-Label3 series.

Limitation for Top Margin Setting :

When the top margin is set to 10 mm or less, the paper length (cut length) should not exceed 50mm. (If the cut paper remains at the paper-exit, a paper jam may occur. There is no limitation when the cut paper is removed.)

Mark Detection < mC-Label3 only >

• Mark Detection:

If this feature is set to **Enable**, the printer will detect the cut position (black mark or gap) when turned on.

Setting	Default	Details
Disable	✓	The cutting position is not detected at the first printing after turning on the power.
Enable		The cutting position is detected at the first printing after turning on the power.

Cut Options

• Page Cut Type:

This sets the cutting method for the end of all pages, excluding the last page.

Setting	Default	Details
No Cut	✓	Does not perform a cut and page feed.
Partial Cut		Feeds paper to cutting position, then cuts the paper, leaving one uncut point in center of paper.
Full Cut *		Paper is fed to cutting position, then a full cut is applied.
Cut *		Paper is fed to cutting position, then a full cut or partial cut is applied.

* This setting value is not supported depending on the model.

• Document Cut Type:

This sets the cutting method for the last page.

Setting	Default	Details
No Cut		Does not perform a cut and page feed.
Partial Cut	✓	Feeds paper to cutting position, then cuts the paper, leaving one uncut point in center of paper.
Full Cut *		Paper is fed to cutting position, then a full cut is applied.
Tear Bar/Tear Off *		Paper is fed to the tear bar (cutting position).
Cut *		Paper is fed to cutting position, then a full cut or partial cut is applied.

* This setting value is not supported depending on the model.

Data Treatment Recover From Error

• Data Treatment Recover From Error:

When an error occurs, you can handle the unprinted data which has already been sent to the printer as below.

Setting	Default	Details
No Use		After the recovery, the unprinted data of the remainder is printed after the recovery from the error.
Clear Data By Document Unit	✓	After the recovery, the unprinted data of the remainder is canceled after the recovery from the error.

Point! This function is supported by other than the TSP100IIU.

When using the TSP700II, TSP800II, TSP143IIW and TSP143IIILAN

Note: This feature does not operate correctly with old firmware.

If you are using the firmware below, select "No Use".

TSP700II	Firmware version less than 3.0
TSP800II	Firmware version less than 1.2
TSP143IIW	Firmware version less than 1.3
TSP143IIILAN	Firmware version less than 1.2

You can check the firmware version by executing test printing. (For test printing, turn power ON while holding down the FEED button.)

You can update the firmware of TSP143IIW and TSP143IIILAN from the dedicated utility. For details, please check our website.

Firmware updates for other models, please contact your STAR dealer.

Cash Drawer Control

• Cash Drawer:

This sets the operations of the cash drawer.

Setting	Default	Details
Do Not Open Drawers	✓	No cash drawer drive.
Open Drawer 1		Drives cash drawer 1 immediately after printing.
Open Drawer 2		Drives cash drawer 2 immediately after printing.
Open Drawer 1 and 2		Drives cash drawers 1 and 2 immediately after printing.

Note: If you are using POP10CI and POP10CBI, cash drawer 2 is not supported.

• Cash Drawer 1 Pulse Width:

This sets the cash drawer 1 pulse width.

Setting	Default	Details
10 milliseconds		Sets the pulse width to 0.01 seconds.
100 milliseconds		Sets the pulse width to 0.1 seconds.
200 milliseconds	✓	Sets the pulse width to 0.2 seconds.
300 milliseconds		Sets the pulse width to 0.3 seconds.
400 milliseconds		Sets the pulse width to 0.4 seconds.
500 milliseconds		Sets the pulse width to 0.5 seconds.
600 milliseconds		Sets the pulse width to 0.6 seconds.
700 milliseconds		Sets the pulse width to 0.7 seconds.
800 milliseconds		Sets the pulse width to 0.8 seconds.
900 milliseconds		Sets the pulse width to 0.9 seconds.
1000 milliseconds		Sets the pulse width to 1.0 seconds.
1100 milliseconds		Sets the pulse width to 1.1 seconds.
1200 milliseconds		Sets the pulse width to 1.2 seconds.

Note: The pulse width for cash drawer 2 is fixed at 200 milliseconds.

Buzzer 1 Control and Buzzer 2 Control

• Buzzer 1 (or Buzzer 2):

This sets the drive of either buzzer 1 or buzzer 2.

Setting	Default	Details
No Use	✓	Buzzer 1 or buzzer 2 is not used.
Document Top		Executes buzzer 1 (or 2) at the top of the document.
Document Bottom		Executes buzzer 1 (or 2) at the bottom of the document.

Cautions: When a device other than a buzzer or mC-Sound, such as a cash drawer, is connected, select 'No Use'. If the wrong setting is selected, the device may be damaged.

- **Buzzer 1 (Buzzer 2) - On Time:**

This sets the time to ring buzzer 1 or buzzer 2.

Setting	Default	Details
20 milliseconds	✓	Sets to 0.02 seconds.
40 milliseconds		Sets to 0.04 seconds.
100 milliseconds		Sets to 0.1 seconds.
200 milliseconds		Sets to 0.2 seconds.
500 milliseconds		Sets to 0.5 seconds.
1000 milliseconds		Sets to 1.0 seconds.
2000 milliseconds		Sets to 2.0 seconds.
5000 milliseconds		Sets to 5.0 seconds.

- **Buzzer 1 (Buzzer 2) - Off Time:**

This sets buzzer 1 or buzzer 2 off time.

Setting	Default	Details
20 milliseconds	✓	Sets to 0.02 seconds.
40 milliseconds		Sets to 0.04 seconds.
100 milliseconds		Sets to 0.1 seconds.
200 milliseconds		Sets to 0.2 seconds.
500 milliseconds		Sets to 0.5 seconds.
1000 milliseconds		Sets to 1.0 seconds.
2000 milliseconds		Sets to 2.0 seconds.
5000 milliseconds		Sets to 5.0 seconds.

- **Buzzer 1 (Buzzer 2) - Repeat:**

This sets the number of times to ring buzzer 1 (or buzzer 2) driven by the timing set at 1:Buzzer 1 (or Buzzer 2).

The buzzer will stop regardless of the number of times set to ring by pressing the "FEED".

Setting	Default	Details
1	✓	Rings buzzer 1 (or buzzer 2) Once.
2		Rings buzzer 1 (or buzzer 2) twice.
3		Rings buzzer 1 (or buzzer 2) three times.
5		Rings buzzer 1 (or buzzer 2) five times.
10		Rings buzzer 1 (or buzzer 2) ten times.
15		Rings buzzer 1 (or buzzer 2) fifteen times.
20		Rings buzzer 1 (or buzzer 2) twenty times.

Note : The buzzer ringing time and off time should not exceed 90 seconds in total.

mC-Sound Control < mC-Print3 and TSP100IV series >

• mC-Sound:

This sets mC-Sound operation.

Setting	Default	Details
No Use	✓	Does not activate mC-Sound.
Document Top		Executes mC-Sound at the top of the document.
Document Bottom		Executes mC-Sound at the bottom of the document.

Cautions :

- 1) *When a device other than a buzzer or mC-Sound, such as a cash drawer, is connected, select 'No Use'. If the wrong setting is selected, the device may be damaged.*
- 2) *If you play sound from the printer drivers, the values which are set in 'Sound Area', 'Sound Number', and 'Volume' of mC-Sound Control will take priority. This will apply even when the sound source and volume are set using the mC-Sound DIP switches.*

• mC-Sound - Sound Storage Area:

Selects the sound storage area for mC-Sound. The sound source can be set with the combination of sound storage area and sound number. The sound sources which can be set are as shown in the list of setting sound sources.

Setting	Default	Details
1	✓	Sets to sound storage area 1.
2		Sets to sound storage area 2.

• mC-Sound - Sound Number:

Selects the sound storage area for mC-Sound. The sound source can be set with the combination of sound storage area and sound number. The sound sources which can be set are as shown in the list of setting sound sources.

Setting	Default	Details
0	✓	Sets to sound number 0.
1		Sets to sound number 1.
2		Sets to sound number 2.
3		Sets to sound number 3.
4		Sets to sound number 4.
5		Sets to sound number 5.
6		Sets to sound number 6.
7		Sets to sound number 7.

■ Setting Sound Sources

Sound Storage Area	Sound Number	Sound Source
1	0	Sound1
1	1	Sound2
1	2	Sound3
1	3	Sound4
1	4	Sound5
1	5	Sound6
1	6	Sound7
1	7	Sound8

Sound Storage Area	Sound Number	Sound Source
2	0	Sound9
2	1	Sound10
2	2	Sound11
2	3	Sound12
2	4	Sound13
2	5	Sound14
2	6	Sound15
2	7	Sound16

- **mC-Sound - Sound Volume:**

Selects the mC-Sound sound volume.

Setting	Default	Details
0(Mute)		mC-Sound is muted.
1		Sets the mC-Sound sound volume to 1.
2(Low)		Sets the mC-Sound sound volume to 2.
3		Sets the mC-Sound sound volume to 3.
4		Sets the mC-Sound sound volume to 4.
5		Sets the mC-Sound sound volume to 5.
6(Medium)	✓	Sets the mC-Sound sound volume to 6.
7		Sets the mC-Sound sound volume to 7.
8		Sets the mC-Sound sound volume to 8.
9		Sets the mC-Sound sound volume to 9.
10		Sets the mC-Sound sound volume to 10.
11		Sets the mC-Sound sound volume to 11.
12(High)		Sets the mC-Sound sound volume to 12.
13		Sets the mC-Sound sound volume to 13.
14		Sets the mC-Sound sound volume to 14.
15		Sets the mC-Sound sound volume to 15.

- **mC-Sound - Repeat:**

Sets the number of times to repeat mC-Sound playback.

Setting	Default	Details
1	✓	Sets mC-Sound to play 1 time.
2		Sets mC-Sound to play 2 time.
3		Sets mC-Sound to play 3 time.
4		Sets mC-Sound to play 4 time.
5		Sets mC-Sound to play 5 time.
6		Sets mC-Sound to play 6 time.
7		Sets mC-Sound to play 7 time.
8		Sets mC-Sound to play 8 time.
9		Sets mC-Sound to play 9 time.
10		Sets mC-Sound to play 10 time.

Taken Sensor Control < mC-Label3 and TSP143IV-UE SK only >**• Hold Print:**

Set the printer operation when paper hold is detected at the paper exit.

Setting	Default	Details
Disable		Print data no matter when paper is in the paper exit or not.
Enable	✓	Wait for the next print job until the paper is removed from the printer paper exit.

2.1.2 Portable Printers

Output Options

- **Print Quality (Speed):**

Sets the print quality. Note that the setting also affects the print speed.

Setting	Default	Details
Standard (High Speed)	✓	Print speed has priority over quality.
High Quality (Low Speed)		Print quality and speed are in the middle.

- **Print Density:**

Sets the printing density.

Setting Value	Default	Details
High		Larger value with +(plus) makes print density darker.
Medium	✓	Prints with normal density.
Low		Larger value with -(minus) makes print density lighter.
Special		For paper with poor color developability such as labels.

- **Page Type:**

Sets the page type.

Setting	Default	Details
Variable Length	✓	Does not output blank data until the bottom of the page. Receipt ends after final data is printed.
Fixed Length		Outputs blank data as a blank until the bottom of the page. Receipt ends after printing the length specified by paper size.
Black Mark		Outputs blank data as a blank until the black mark. Receipt ends after the black mark is detected.
Black Mark (FRONT, BACK, Gap/Hole, 2inch, 3inch, Center)		Outputs blank data as a blank until the black mark. Receipt ends after the black mark is detected. FRONT: Configure this setting if you are using paper with black marks on its front side. BACK: Configure this setting if you are using paper with black marks on its back side. Gap/Hole: Configure this setting if you are using labels. 2inch: Configure this setting if you are using 2 inch paper with black marks. 3inch: Configure this setting if you are using 3 inch paper with black marks. Center: Configure this setting if you are using paper with black marks on its center.
Label(Gap)		If you want the printer to feed paper until the head of the label detected by the transmission sensor.

Feed Options

- **Page Feed Type:**

This sets the page feed operation for the end of all pages, excluding the last page.

Setting	Default	Details
No Feed	✓	The paper feed operation is not performed.
Tear Bar		Paper is fed to the tear bar (cutting position).

- **Document Feed Type:**

This sets the page feed operation for the last page.

Setting	Default	Details
No Feed		The paper feed operation is not performed.
Tear Bar	✓	Paper is fed to the tear bar (cutting position).

Black Mark Detection

- **Black Mark Detection:**

If this feature is set to **Enable**, the printer will detect the black mark position when turned on.

Setting	Default	Details
Disable	✓	At power on, does not execute paper feed in accordance with detection of black mark position.
Enable		At power on, feeds paper according to black mark position.

Data Treatment Recover From Error

- **Data Treatment Recover From Error:**

When an error occurs, you can handle the unprinted data which has already been sent to the printer as below.

Setting	Default	Details
No Use		After the recovery, the unprinted data of the remainder is printed after the recovery from the error.
Clear Data By Document Unit	✓	After the recovery, the unprinted data of the remainder is canceled after the recovery from the error.

2.1.3 Dot Matrix Printers

Output Options

- **Bidirectional Printing:**

Use this feature to select either unidirectional or bidirectional printing. Note that the setting affects both the print speed and the print quality. Available settings are as follows.

Setting	Default	Details
Budirectional	✓	Printer prints in both directions.
Unidirectional		Printer prints in one direction only.

- **Page Type:**

This sets the page type.

Setting	Default	Details
Variable Length	✓	Does not output blank data until the bottom of the page. Receipt ends after final data is printed.
Fixed Length		Outputs blank data as a blank until the bottom of the page. Receipt ends after printing the length specified by paper size.

- **Resolution:**

This sets the print quality (resolution).

Setting	Default Value	Details
170 x 72 DPI	✓	Print width is 170 dpi; print height is 72 dpi.
85 x 72 DPI		Print width is 85 dpi; print height is 72 dpi.

Data Treatment Recover From Error

- **Data Treatment Recover From Error:**

When an error occurs, you can handle the unprinted data which has already been sent to the printer as below.

Setting	Default	Details
No Use		After the recovery, the unprinted data of the remainder is printed after the recovery from the error.
Clear Data By Document Unit	✓	After the recovery, the unprinted data of the remainder is canceled after the recovery from the error.

Note: This feature does not operate correctly with old firmware. If you are using version 3.0 or earlier of the firmware, select 'No Use'. You can check the firmware version by executing Self-Printing. To update the printer's firmware, contact your STAR dealer.

Cut Options (Cutter Model)

• Page Cut Type:

This sets the cutting method for the end of all pages, excluding the last page.

Setting	Default	Details
No Cut	✓	Does not perform a cut and page feed.
Partial Cut		Feeds paper to cutting position, then cuts the paper, leaving one uncut point in center of paper.

• Document Cut Type:

This sets the cutting method for the last page.

Setting	Default	Details
No Cut		Does not perform a cut and page feed.
Partial Cut	✓	Feeds paper to cutting position, then cuts the paper, leaving one uncut point in center of paper.

Feed Options (Tear Bar Model)

• Page Feed Type:

This sets the page feed operation for the end of all pages, excluding the last page.

Setting	Default	Details
No Feed	✓	The paper feed operation is not performed.
Tear Bar		Paper is fed to the tear bar (cutting position).

• Document Feed Type:

This sets the page feed operation for the last page.

Setting	Default	Details
No Feed		The paper feed operation is not performed.
Tear Bar	✓	Paper is fed to the tear bar (cutting position).

Cash Drawer Control

• Cash Drawer:

This sets the operations of the cash drawer.

Setting	Default	Details
Do Not Open Drawers	✓	No cash drawer drive.
Open Drawer 1		Drives cash drawer 1 immediately after printing.
Open Drawer 2		Drives cash drawer 2 immediately after printing.
Open Drawer 1 and 2		Drives cash drawers 1 and 2 immediately after printing.

• Cash Drawer 1 Pulse Width:

This sets the cash drawer 1 pulse width.

Setting	Default	Details
10 milliseconds		Sets the pulse width to 0.01 seconds.
100 milliseconds		Sets the pulse width to 0.1 seconds.
200 milliseconds	✓	Sets the pulse width to 0.2 seconds.
300 milliseconds		Sets the pulse width to 0.3 seconds.
400 milliseconds		Sets the pulse width to 0.4 seconds.
500 milliseconds		Sets the pulse width to 0.5 seconds.
600 milliseconds		Sets the pulse width to 0.6 seconds.
700 milliseconds		Sets the pulse width to 0.7 seconds.
800 milliseconds		Sets the pulse width to 0.8 seconds.
900 milliseconds		Sets the pulse width to 0.9 seconds.
1000 milliseconds		Sets the pulse width to 1.0 seconds.
1100 milliseconds		Sets the pulse width to 1.1 seconds.
1200 milliseconds		Sets the pulse width to 1.2 seconds.

Note : 1) Do not enable the cash drawer and buzzer at the same time.
2) The pulse width for cash drawer 2 is fixed at 200 milliseconds.

Buzzer 1 Control and Buzzer 2 Control

• Buzzer 1 (or Buzzer 2):

This sets the drive of either buzzer 1 or buzzer 2.

Setting	Default	Details
No Use	✓	Buzzer 1 or buzzer 2 is not used.
Document Top		Executes buzzer 1 (or 2) at the top of the document.
Document Bottom		Executes buzzer 1 (or 2) at the bottom of the document.

Cautions : When a device other than a buzzer, such as a cash drawer, is connected, select 'No Use'. There is the possibility that the connected device and the circuit can be damaged by using the Buzzer Control command.

• **Buzzer 1 (Buzzer 2) - On Time:**

This sets the time to ring buzzer 1 or buzzer 2.

Setting	Default	Details
20 milliseconds	✓	Sets to 0.02 seconds.
40 milliseconds		Sets to 0.04 seconds.
100 milliseconds		Sets to 0.1 seconds.
200 milliseconds		Sets to 0.2 seconds.
500 milliseconds		Sets to 0.5 seconds.
1000 milliseconds		Sets to 1.0 seconds.
2000 milliseconds		Sets to 2.0 seconds.
5000 milliseconds		Sets to 5.0 seconds.

• **Buzzer 1 (Buzzer 2) - Off Time:**

This sets buzzer 1 or buzzer 2 off time.

Setting	Default	Details
20 milliseconds	✓	Sets to 0.02 seconds.
40 milliseconds		Sets to 0.04 seconds.
100 milliseconds		Sets to 0.1 seconds.
200 milliseconds		Sets to 0.2 seconds.
500 milliseconds		Sets to 0.5 seconds.
1000 milliseconds		Sets to 1.0 seconds.
2000 milliseconds		Sets to 2.0 seconds.
5000 milliseconds		Sets to 5.0 seconds.

• **Buzzer 1 (Buzzer 2) - Repeat:**

This sets the number of times to ring buzzer 1 (or buzzer 2) driven by the timing set at 1:Buzzer 1 (or Buzzer 2).

The buzzer will stop regardless of the number of times set to ring by pressing the "FEED".

Setting	Default	Details
1	✓	Rings buzzer 1 (or buzzer 2) Once.
2		Rings buzzer 1 (or buzzer 2) twice.
3		Rings buzzer 1 (or buzzer 2) three times.
5		Rings buzzer 1 (or buzzer 2) five times.
10		Rings buzzer 1 (or buzzer 2) ten times.
15		Rings buzzer 1 (or buzzer 2) fifteen times.
20		Rings buzzer 1 (or buzzer 2) twenty times.

Note : 1) Do not enable the cash drawer and buzzer at the same time.
2) The buzzer ringing time and off time should not exceed 90 seconds in total.

2.1.4 Kiosk Printers

Output Options

- **Print Density:**

Sets the printing density.

Setting	Default	Details
Standard	✓	Prints with normal density.
+1 to +3		Larger value with +(plus) makes print density darker.

- **Print Speed:**

Sets the print speed.

Setting	Default	Details
250mm	✓*1	Sets print speed to 250 mm/sec.
220mm		Sets print speed to 220 mm/sec.
200mm		Sets print speed to 200 mm/sec.
190mm		Sets print speed to 190 mm/sec.
170mm		Sets print speed to 170 mm/sec.
150mm	✓*2	Sets print speed to 150 mm/sec.
130mm		Sets print speed to 130 mm/sec.
110mm		Sets print speed to 110 mm/sec.

*1 Other than SK5-31 presenter series *2 SK5-31 presenter series

- **Page Type:**

Sets the page type.

Setting	Default	Details
Variable Length	✓	Does not output blank data until the bottom of the page. Receipt ends after final data is printed.
Fixed Length		Outputs blank data as a blank until the bottom of the page. Receipt ends after printing the length specified by paper size.
Black Mark		Outputs blank data as a blank until the black mark. Receipt ends after the black mark is detected.
Label *		Outputs blank data as a blank until the the head of the label detected by the transmission sensor.

* This setting value is supported by Non-presenter model.

Note: Label* setting is not supported when the presenter and bezel are connected. Also, SK1-311/321 and SK1-211/221 support Label setting from firmware 1.1 or later.

Mark Detection

- **MarkDetection:**

If this feature is set to **Enable**, the printer will detect the black mark or label position when turned on.

Setting	Default	Details
Disable	✓	At power on, does not execute paper feed in accordance with detection of black mark or label position.
Enable		At power on, feeds paper according to black mark or label position.

Cut Options

- **Cut Type <Presenter only>:**

This sets the cutting method.

Setting	Default	Details
Full Cut All Pages	✓	Cuts all pages.(Feeds each page to the cut position, then cuts it.)
Full Cut Last Pages		Cuts last page of document. (Does not cut each page.)

- **Page Cut Type <Non-presenter only>:**

This sets the cutting method for the end of all pages, excluding the last page.

Setting	Default	Details
No Cut	✓	Does not perform a cut and page feed.
Partial Cut		Feeds paper to cutting position, then cuts the paper, leaving one uncut point in center of paper.
Full Cut		Paper is fed to cutting position, then a full cut is applied.

- **Document Cut Type <Non-presenter only>:**

This sets the cutting method for the last page.

Setting	Default	Details
No Cut		Does not perform a cut and page feed.
Partial Cut	✓	Feeds paper to cutting position, then cuts the paper, leaving one uncut point in center of paper.
Full Cut		Paper is fed to cutting position, then a full cut is applied.

Data Treatment Recover From Error

- **Data Treatment Recover From Error:**

When an error occurs, you can handle the unprinted data which has already been sent to the printer as below.

Setting	Default	Details
No Use		After the recovery, the unprinted data of the remainder is printed after the recovery from the error.
Clear Data By Document Unit	✓	After the recovery, the unprinted data of the remainder is canceled after the recovery from the error.

Bezel Control (Optional) <Non-Presenter only>

• Bezel Hold Print:

Sets bezel operation.

Setting	Default	Details
Disable	✓	Print data no matter when paper is in the bezel or not.
Enable		Wait to print data until the paper in the bezel is removed.

Note :

For SK1-311/321 and SK1-211/221, Bezel Hold Print function is supported from firmware 1.1 or later.

Presenter Control <Presenter only>

• Presenter Action:

Sets presenter operation.

Setting	Default	Details
Loop - Hold - Retract	✓	After printing is completed, presents (outputs and holds) the printed paper and waits for it to be removed. Retracts the paper if it is not removed within the specified retraction time.
Loop - Hold - Eject		After printing is completed, presents (outputs and holds) the printed paper and waits for it to be removed. Ejects the paper if it is not removed within the specified retraction time.
No Loop - Hold - Retract		Begins outputting the paper while printing is in progress, then holds it and waits for its removal. Retracts the paper if it is not removed within the specified retraction time.
No Loop - Hold - Eject		Begins outputting the paper while printing is in progress, then holds it and waits for its removal. Ejects the paper if it is not removed within the specified retraction time.
No Loop - No Hold - Eject		Outputs the paper while printing is in progress, and then ejects it. Does not hold the paper.

• Presenter Timeout:

Sets amount of time "Presenter Action".

Setting	Default	Details
Do Not Timeout	✓	Holds paper until it is removed.
10 - 120 seconds		Sets amount of time presenter will hold out the printed paper before either retracting or ejecting it. Can be set in 10-second increments.

Note : If the Presenter Action is set to "NoLoop - NoHold - Eject", the Presenter Timeout setting is meaningless and the presenter will eject the paper without holding it.

LED Control (Optional*)

*SK1-41 and SK1-41 presenter are not supported

• LED Control:

Sets LED operation.

Setting	Default	Details
Disable	✓	LED not used.
Printing		Printing LED blinks during printing.
Error		Error LED blinks when error occurs. (paper out, etc.)
Printing + Error		Printing LED blinks during printing, and Error LED blink when error occur. (paper out, etc.)
Printing + Error + Idle		Printing LED blinks during printing, Error LED blink when error occur and Idle LED blinks or lights when idle.

Note: Except SK5-31 presenter, "Printing + Error + Idle" setting is supported by firmware 1.1 or later.

• Printing LED Interval:

Sets the blink interval for the Printing LED.

Setting	Default	Details
Default (100 millisecc)	✓	Blink every 0.1 seconds.
200 millisecc		Blink every 0.2 seconds.
500 millisecc		Blink every 0.5 seconds.
1000 millisecc		Blink every once per seconds.

• Error LED Interval:

Sets the blink interval for the Error LED.

Setting	Default	Details
Default (100 millisecc)	✓	Blink every 0.1 seconds.
200 millisecc		Blink every 0.2 seconds.
500 millisecc		Blink every 0.5 seconds.
1000 millisecc		Blink every once per seconds.

• Idle LED Interval:

Sets the lighting or blink interval for the Idle LED.

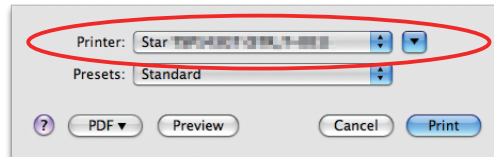
Setting	Default	Details
Default (Always On)	✓	Always lights.
100 millisecc		Blink every 0.1 seconds.
200 millisecc		Blink every 0.2 seconds.
500 millisecc		Blink every 0.5 seconds.
1000 millisecc		Blink every once per seconds.

Note: Except SK5-31 presenter, Idle LED Interval function is supported by firmware 1.1 or later.

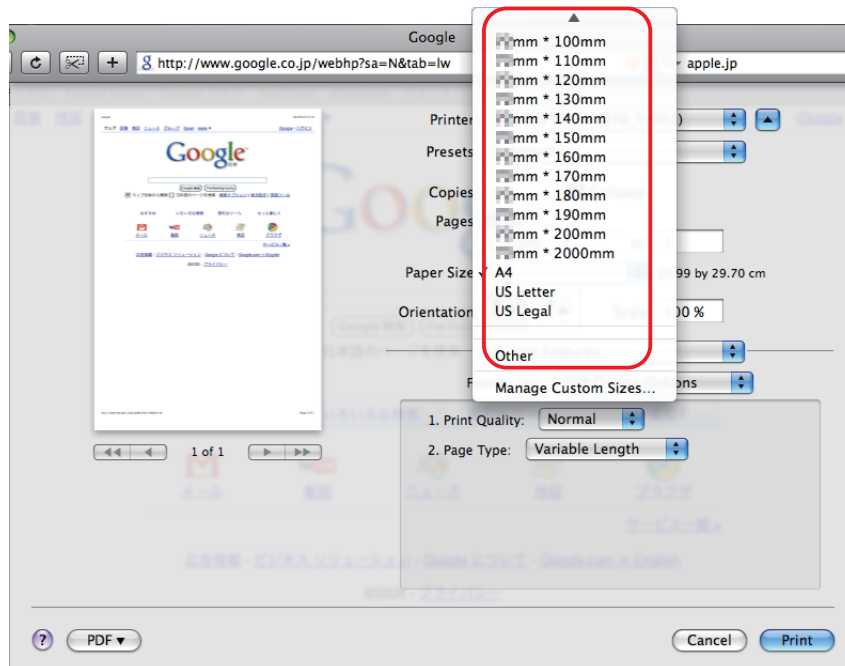
3. Setting the Paper Size

3.1 Setting the Paper Size

From the menu bar on Mac OS X, open [File] - [Printers].
 Select the printer to set from the "Printer:" pull-down menu.
 If details are not displayed, click on [▼] to display them.



Next, select the paper size from the Paper Size pull-down menu.
 See section 3.2 Settable Paper Sizes for details on the sizes of paper that can be used.



Point! When a paper size is selected that exceeds the maximum printing width, the print is shrunk to fit the maximum printing width.

Limitations for Bluetooth models:

The maximum page length printable by Bluetooth printers is 1500 mm. Please specify the paper size within 1500 mm.

3.2 Settable Paper Sizes

The following paper sizes are available and can be set.

In some cases, these settings will not work as expected depending on the application being used to print from.

3.2.1 Thermal Printers

Paper Size	Supported Models				
	mPOP	mC-Print3	mC-Print2	mC-Label3	BSC10II
34.5 * 100mm	○	○	○	○	
34.5 * 200mm	○	○	○	○	
34.5 * 1500mm	○	○	○	○	
48 * 100mm	○	○	○	○	○
48 * 200mm	○	○	○	○	○
48 * 1500mm	○	○	○	○	○
50.8 * 100mm	○	○	○	○	○
50.8 * 200mm	○	○	○	○	○
50.8 * 1500mm	○	○	○	○	○
51 * 100mm					○
51 * 200mm					○
51 * 1500mm					○
52.5 * 100mm				○	
52.5 * 200mm				○	
52.5 * 1500mm				○	
54 * 100mm	○		○	○	
54 * 200mm	○		○	○	
54 * 1500mm	○		○	○	
72 * 100mm		○		○	○
72 * 200mm		○		○	○
72 * 1500mm		○		○	○
A4	○	○	○	○	○
Letter	○	○	○	○	○
Legal	○	○	○	○	○

Paper Size	Supported Models			
	TSP100*	TSP654II	TSP700II	TSP800II
32 * 100mm	○**			
32 * 200mm	○**			
32 * 1500mm	○**			
34.5 * 100mm	○**			
34.5 * 200mm	○**			
34.5 * 1500mm	○**			
50.8 * 30mm	○		○	
⋮	⋮		⋮	
50.8 * 200mm	○		○	
50.8 * 1500mm	○		○	
50.8 * 2000mm	○		○	
52 * 30mm			○	
⋮			⋮	
52 * 200mm			○	
52 * 1500mm			○	
52 * 2000mm			○	
52.5 * 30mm			○	
⋮			⋮	
52.5 * 200mm			○	
52.5 * 1500mm			○	
52.5 * 2000mm			○	
72 * 30mm	○		○	
⋮	⋮		⋮	
72 * 200mm	○		○	
72 * 1500mm	○		○	
72 * 2000mm	○		○	
80 * 30mm			○	
⋮			⋮	
80 * 200mm			○	
80 * 1500mm			○	
80 * 2000mm			○	
104 * 30mm				○
⋮				⋮
104 * 200mm				○
104 * 1500mm				○
104 * 2000mm				○
A4	○		○	○
Letter	○		○	○
Legal	○		○	○

* TSP100: TSP100IV, TSP100IV SK, TSP100IIIW/LAN/BI/U, TSP100IIU

** Only the TSP100IV SK is supported.

3.2.2 Portable Printers

Paper Size	Supported Models				
	SM-T300i	SM-T400i	SM-S230i	SM-L200	SM-L300
48mm * 100mm			○	○	
48mm * 200mm			○	○	
48mm * 1500mm			○	○	
50.8mm * 100mm					○
50.8mm * 200mm					○
50.8mm * 1500mm					○
72mm * 100mm	○				○
72mm * 200mm	○				○
72mm * 1500mm	○				○
104mm * 100mm		○			
104mm * 200mm		○			
104mm * 1500mm		○			
A4	○	○	○	○	○
Letter	○	○	○	○	○
Legal	○	○	○	○	○

3.2.3 Dot Matrix Printers

Paper Size	SP700	Paper Size	SP700
45 * 30mm	○	60 * 30mm	○
45 * 40mm	○	60 * 40mm	○
⋮	⋮	⋮	⋮
45 * 190mm	○	60 * 190mm	○
45 * 200mm	○	60 * 200mm	○
45 * 1500mm	○	60 * 1500mm	○
45 * 2000mm	○	60 * 2000mm	○
48 * 30mm	○	63 * 30mm	○
48 * 40mm	○	63 * 40mm	○
⋮	⋮	⋮	⋮
48 * 190mm	○	63 * 190mm	○
48 * 200mm	○	63 * 200mm	○
48 * 1500mm	○	63 * 1500mm	○
48 * 2000mm	○	63 * 2000mm	○

3.2.4 Kiosk Printers

Paper Size	Supported Models					
	SK1 311 SK1 321	SK1 311 Presenter	SK1 211 SK1 221	SK1 211 Presenter SK1 221 Presenter	SK1-41 SK1-41 Presenter	SK5-31 Presenter
54mm * 100mm	○	○	○	○		○
54mm * 200mm	○	○	○	○		○
54mm * 1500mm	○	○	○	○		○
56mm * 100mm	○	○	○	○		○
56mm * 200mm	○	○	○	○		○
56mm * 1500mm	○	○	○	○		○
68mm * 100mm	○	○				○
68mm * 200mm	○	○				○
68mm * 1500mm	○	○				○
72mm * 100mm	○	○			○	○
72mm * 200mm	○	○			○	○
72mm * 1500mm	○	○			○	○
80mm * 100mm	○	○			○	○
80mm * 200mm	○	○			○	○
80mm * 1500mm	○	○			○	○
A4	○	○	○	○	○	○
Letter	○	○	○	○	○	○
Legal	○	○	○	○	○	○

3.3 Custom Paper Sizes < Supported by mC-Label3 Series >

Custom paper size can be defined uniquely.
Follow the procedure below to create paper size.

1. Open [File] - [Print], select "Paper Size".
2. Open [Manage Custom Size], create paper size.
If [Manage Custom Size] cannot be found, select "Print using system dialog" and then [Manage Custom Size] is displayed.
3. Set width and height within the following range.

Supported models	Paper width (width)		Paper length (height)	
	Minimum Value	Maximum Value	Minimum Value	Maximum Value
mC-Label3	15mm	72mm	25.4mm	2000mm

Point! Set the margin according to the paper that you use. It can be set from 0 mm.

4. Guidelines for Using an Ethernet Environment

The printer's IP address must be set in advance to use a printer that supports LAN using this driver. If your LAN environment does not allow acquisition of an IP address from a DHCP server, set the IP address to the printer in advance.

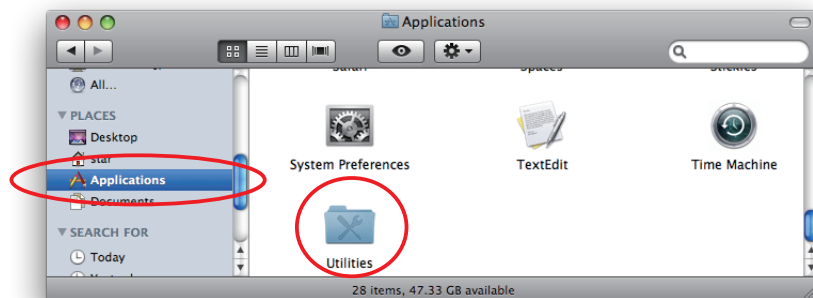
4.1 Setting a Temporary IP Address

Use the following procedures to set a temporary IP address to the printer.

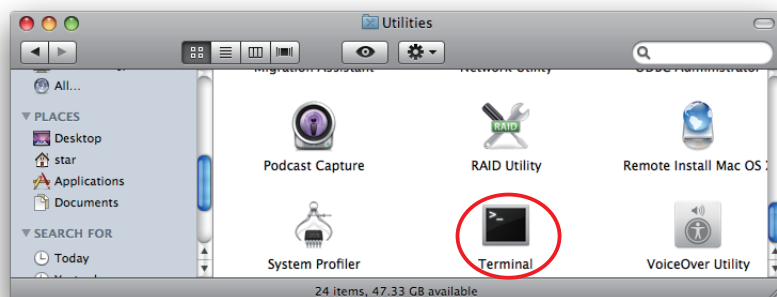
Important: Printer settings should be done by a user with administrator rights.

Point! A MAC address of the printer to be set is necessary for the temporary IP address. Confirm the MAC address in a self-print from the printer. See the Hardware Manual for details on running a self-print.

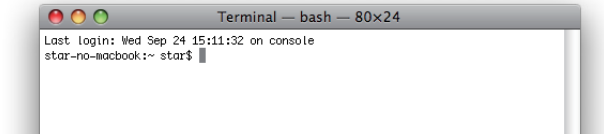
1. Connect the Ethernet cable to the printer and turn the power ON to the printer.
2. Startup the Finder from the Mac OS X Dock and click [Applications] - [Utilities].



3. Click on [Terminal].



3. The terminal starts up.



Execute the following command in the terminal to set a temporary IP address to the printer.

1. `sudo arp -d [Printer temporary IP address]`
2. `sudo arp -s [Printer temporary IP address] [Printer MAC address]`
3. `ping -c 4 [Printer temporary IP address]`
4. `sudo arp -d [Printer temporary IP address]`

Example of temporary IP address (192.168.222.217)

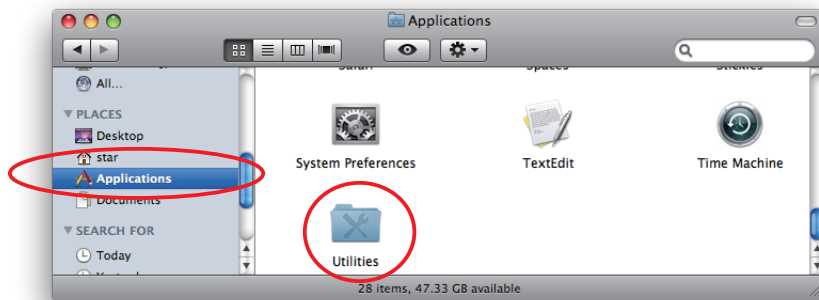
```
sudo arp -d 192.168.222.217
sudo arp -s 192.168.222.217 00:11:62:00:03:4D
ping -c 4 192.168.222.217
sudo arp -d 192.168.222.217
```

Note: The temporary IP address set here is erased when the printer power is turned off. Continue by setting the IP address. (From (2) in section 4.2.)

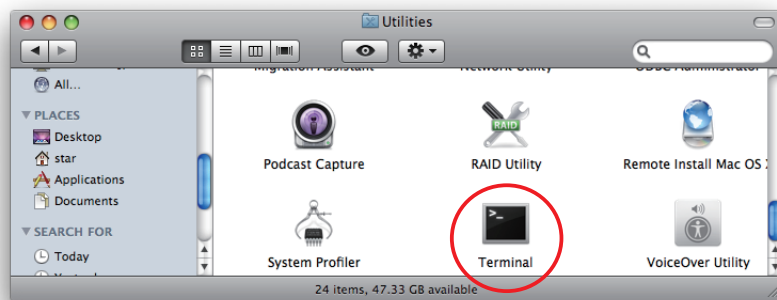
4.2 Setting the IP Address << StarPrinter TELNET Utility >>

The Telnet command connects directly to the printer to make settings.

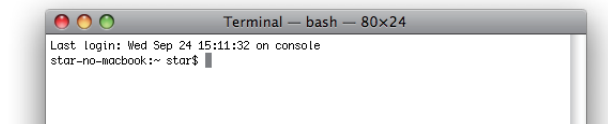
1. Connect the Ethernet cable to the printer and turn the power ON to the printer.
2. Startup the Finder from the Mac OS X Dock, and and click [Applications] - [Utilities].



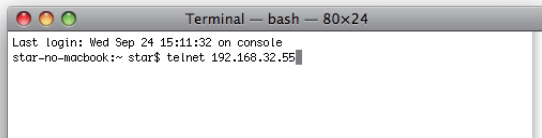
3. Click on [Terminal].



4. The terminal starts up.



5. Use the Telnet command to connect to the printer to set.

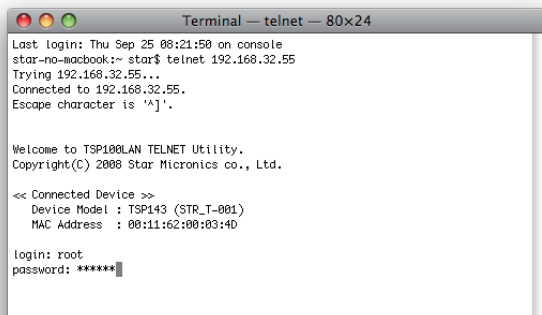


```
Terminal — bash — 80x24
Last login: Wed Sep 24 15:11:32 on console
star-no-macbook:~ star$ telnet 192.168.32.55
```

Ex. >telnet 192.168.222.217 (The IP address of the printer to be set.)

Note: You cannot connect to a printer that does not have an IP address. See section 4.1 Setting a Temporary IP Address for details on setting such an address on the printer in advance.

6. Log-in to the printer to be set as a "root" user.
The default password is "public."
To change the password, input the changed password.



```
Terminal — telnet — 80x24
Last login: Thu Sep 25 08:21:50 on console
star-no-macbook:~ star$ telnet 192.168.32.55
Trying 192.168.32.55...
Connected to 192.168.32.55.
Escape character is '^]'.

Welcome to TSP100LAN TELNET Utility.
Copyright(C) 2008 Star Micronics co., Ltd.

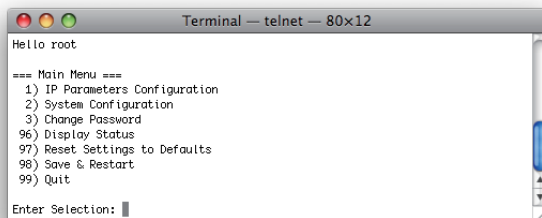
<< Connected Device >>
Device Model : TSP143 (STR_T-001)
MAC Address  : 00:11:62:00:03:4D

login: root
password: *****
```

7. The following menu is displayed.

- 1) IP Parameters Configuration
 - 2) System Configuration
 - 3) Change Password
 - 96) Display Status
 - 97) Reset Settings to Defaults
 - 98) Save and Restart
 - 99) Quit
- Enter Selection

Input the number that corresponds to your selection.



```
Terminal — telnet — 80x12
Hello root

=== Main Menu ===
1) IP Parameters Configuration
2) System Configuration
3) Change Password
96) Display Status
97) Reset Settings to Defaults
98) Save & Restart
99) Quit

Enter Selection: █
```

- When all settings are completed, save the changes using "98(Save and Restart)" - "1(Save & Restart device & Configuration printing)", or "2 (Save & Restart device)". The settings of the printer will be saved. Reset the printer.

Example : Set the fixed IP address <192.168.222.55> on the printer set with the temporary IP address <192.168.222.217>, the check printing the setting contents.

```
>telnet 192.168.222.217
login : root
password : ***** ( Use "public" when not making changes. )
Enter Selection : 1 ( IP Parameters Configuration )
Enter Selection : 1 ( Static )
Enter Selection : 1 ( IP Address )
Enter IP address (x.x.x.x) : 192.168.222.55
Enter Selection : 99 ( Back to IP Address Menu )
Enter Selection : 99 ( Back to Main Menu )
Enter Selection : 98 ( Save & Restart )
Enter Selection : 1 ( Save & Configuration printing & Restart device )
```

* The actual input portions are shown in bold characters.

5. Guidelines for Using the lpr Command

When printing using the lpr command from the command line, you can specify options with the following format.

```
$lpr -o [option]=[value] -o [option]=[value] ... [Filename]
```

In [option] • [value], specify the name shown in the command "specify name" in section 5.1 List of Supported Functions".

Also for options not specified, print using the default driver settings.

Point! Use the printer name confirmed using the "lpstat -p" command, when specifying the printer name using the option "-P".

Use Example 1

```
Printer Name :    TSP143_ _STR_T_001_
File Name :      sample1.txt
Paper Size * :   50.8 * 200mm
Margin(top) * :  0mm
Margin(bottom) * : 0mm
Margin(left) * : 0mm
Margin(right) * : 0mm
```

* This option is not a printer driver option, but an OS standard option.

```
$ lpr -P TSP143_ _STR_T_001_ -o media="X50D8MMY200MM"
-o page-top=0 -o page-bottom=0 -o page-left=0
-o page-right=0 sample1.txt
```

Use Example 2

```
File Name :      sample2.txt
Print Speed :    Low
```

```
$ lpr -o PrintSpeed=2Low sample2.txt
```

Use Example 3

```
File Name :      sample3.txt
Document Cut Type : No Cut
```

```
$ lpr -o DocCutType=0NoCutDoc sample3.txt
```

5.1 Function List

See section 2.1 Function List for the details on the functions.

5.1.1 Thermal Printers

	Option Name		Command		Supported Model										
	option	value	[option]	[value]	TSP 143 *1	TSP 654II	TSP 743II	TSP 847II	POP 10/ 10CI	MCP 30	MCP 31 *2	MCP 20/ 20B/ 21LB	MCL 32CI/ 32CBI	BSC 10II	
Output Option	Print Speed	High	PrintSpeed	0High	●	●	●	●	●	●	●		●	●	
		Middle		1Middle	○	○	○	○		○	○		○	○	
		Low		2Low	○	○	○	○	○	○	○	○		○	○
	Print Density	-3	PrintDensity	0Minus3	○	○					○	○		○	○
		-2		1Minus2	○	○					○	○		○	○
		-1		2Minus1	○	○					○	○		○	○
		Standard		3ZERO	●	●			●	●	●	●	●	●	●
		+1		4Plus1	○	○				○	○	○	○	○	○
		+2		5Plus2	○	○				○	○	○	○	○	○
		+3		6Plus3	○	○				○	○	○	○	○	○
		+4		7Plus4							○	○			
	Page Type	Variable Length	PageType	0Variable	●	●	●	●	●	●	●	●	●	●	●
		Fixed Length		1Fixed	○	○	○	○	○	○	○	○	○	○	○
		Black Mark		2BlackMark										○	
		Label(Gap)		9Label										○	
	Top Search	Disable	TopSearch	0Disable			●	●							
		Enable		1Enable			○	○							
	Top Margin	Disable	TopMargin	0Disable								●		○	
		2mm		1Millimeter2								○			
		3mm		2Millimeter3								○		●	
4mm		3Millimeter4									○				
5mm		4Millimeter5									○				
6mm		5Millimeter6									○				
7mm		6Millimeter7									○				
8mm		7Millimeter8									○				
9mm		8Millimeter9									○				
10mm		9Millimeter10									○				
Mark Detection	MarkDetection	Disable	BlackMark Detection	1Disable									●		
		Enable		2Enable									○		
Cut Options (Cutter)	Page Cut Type	No Cut	PageCutType	0NoCutPage	●	●	●	●	●	●	●	●	●	●	
		Partial Cut		1PartialCutPage	○	○	○	○	○	○	○	○	○	○	
		Full Cut		2FullCutPage				○	○			○			
		Cut		1CutPage											
	Document Cut Type	No Cut	DocCutType	0NoCutDoc	○	○	○	○	○	○	○	○	○	○	○
		Partial Cut		1PartialCutDoc	●	●	●	●	●	●	●	●	●	●	
		Full Cut		2FullCutDoc			○	○	○			○			
		Tear Bar		3TearBarDoc				○							
		Tear Off		3TearOffDoc										○	
		Cut		1CutDoc											
Data Treatment Recover From Error	Data Treatment Recover From Error	No Use	DataTreatment RecoverFrom Error	0NoUse	● ^{*3}	○	○	○	○	○	○	○	○	○	
		Clear Data By Document Unit		1ClearDataBy DocumentUnit	○ ^{*3}	●	●	●	●	●	●	●	●	●	

*1 TSP143: TSP143IV-UE, TSP143IV-UE SK, TSP143IIIIW/LAN/BI/U, TSP100IIU

*2 MCP31CI, MCP31CBI, MCP31L, MCP31LB, MCP31C, MCP31CB

*3 TSP143IV-UE, TSP143IV-UE SK, TSP143IIIIW/LAN/BI/U

* ● is the default setting value.

	Option Name		Command Name		Supported Model										
	option	value	[option]	[value]	TSP 143 *1	TSP 654II	TSP 743II	TSP 847II	POP 10/10CI	MCP 30	MCP 31 *2	MCP 20/20B/21LB	MCL 32CI/32CBI	BSC 10II	
Cash Drawer Control	Cash Drawer	Do Not Open Drawers	CashDrawerSetting	0DoNotOpenDrawers	●	●	●	●	●	●	●	●	●	●	
		Open Drawer 1		1OpenDrawer1	○	○	○	○	○	○	○	○	○	○	
		Open Drawer 2		2OpenDrawer2	○	○	○	○	○	○	○	○	○	○	
		Open Drawer 1 and 2		3OpenDrawer3	○	○	○	○	○	○	○	○	○	○	
	Cash Drawer 1 Pulsh Width	10 milliseconds	CashDrawer1PulseWidth	0Millis10	○	○	○	○	○	○	○	○	○	○	○
		100 milliseconds		1Millis100	○	○	○	○	○	○	○	○	○	○	○
		200 milliseconds		2Millis200	●	●	●	●	●	●	●	●	●	●	●
		300 milliseconds		3Millis300	○	○	○	○	○	○	○	○	○	○	○
		400 milliseconds		4Millis400	○	○	○	○	○	○	○	○	○	○	○
		500 milliseconds		5Millis500	○	○	○	○	○	○	○	○	○	○	○
		600 milliseconds		6Millis600	○	○	○	○	○	○	○	○	○	○	○
		700 milliseconds		7Millis700	○	○	○	○	○	○	○	○	○	○	○
		800 milliseconds		8Millis800	○	○	○	○	○	○	○	○	○	○	○
		900 milliseconds		9Millis900	○	○	○	○	○	○	○	○	○	○	○
		1000 milliseconds		10Millis1000	○	○	○	○	○	○	○	○	○	○	○
		1100 milliseconds		11Millis1100	○	○	○	○	○	○	○	○	○	○	○
		1200 milliseconds		12Millis1200	○	○	○	○	○	○	○	○	○	○	○
		Buzzer1 Control / Buzzer2 Control		Buzzer1 / Buzzer2	No Use	Buzzer1Setting / Buzzer2Setting	0NoUse		●	●			●	●	●
Document Top	1DocumentTop				○		○			○	○	○	○	○	
Document Bottom	2DocumentBtm				○		○			○	○	○	○	○	
Buzzer1 - On Time / Buzzer2 - On Time	20 milliseconds		Buzzer1OnTime / Buzzer2OnTime	0Millis20		●	●			●	●	●	●	●	
	40 milliseconds			1Millis40		○	○			○	○	○	○	○	
	100 milliseconds			2Millis100		○	○			○	○	○	○	○	
	200 milliseconds			3Millis200		○	○			○	○	○	○	○	
	500 milliseconds			4Millis500		○	○			○	○	○	○	○	
	1000 milliseconds			5Millis1000		○	○			○	○	○	○	○	
	2000 milliseconds			6Millis2000		○	○			○	○	○	○	○	
5000 milliseconds	7Millis5000			○	○			○	○	○	○	○			
Buzzer1 - Off Time / Buzzer2 - Off Time	20 milliseconds		Buzzer1OffTime / Buzzer2OffTime	0Millis20		●	●			●	●	●	●	●	
	40 milliseconds			1Millis40		○	○			○	○	○	○	○	
	100 milliseconds			2Millis100		○	○			○	○	○	○	○	
	200 milliseconds			3Millis200		○	○			○	○	○	○	○	
	500 milliseconds			4Millis500		○	○			○	○	○	○	○	
	1000 milliseconds			5Millis1000		○	○			○	○	○	○	○	
	2000 milliseconds			6Millis2000		○	○			○	○	○	○	○	
5000 milliseconds	7Millis5000			○	○			○	○	○	○	○			
Buzzer1 - Repeat / Buzzer2 - Repeat	1		Buzzer1Repeat / Buzzer2Repeat	0Repeat1		●	●			●	●	●	●	●	
	2			1Repeat2		○	○			○	○	○	○	○	
	3			2Repeat3		○	○			○	○	○	○	○	
	5			3Repeat5		○	○			○	○	○	○	○	
	10			4Repeat10		○	○			○	○	○	○	○	
	15			5Repeat15		○	○			○	○	○	○	○	
	20			6Repeat20		○	○			○	○	○	○	○	

*1 TSP143: TSP143IV-UE, TSP143IV-UE SK, TSP143IIIIW/LAN/BI/U, TSP100IIU

* ● is the default setting value.

*2 MCP31CI, MCP31CBI, MCP31L, MCP31LB, MCP31C, MCP31CB

	Option Name		Command Name		Supported Model									
	option	value	[option]	[value]	TSP 143 *1	TSP 654II	TSP 743II	TSP 843II	POP 10/10CI	MCP 30	MCP 31 *2	MCP 20/20B/21LB	MCL 32CI/32CBI	BSC 10II
mC-Sound Control	mC-Sound	No Use	MelodySpeaker Setting	0NoUse	●*4					●	●			
		Document Top		1DocumentTop	○*4					○	○			
		Document Bottom		2DocumentBtm	○*4					○	○			
	mC-Sound Sound Storage Area	1	MelodySpeaker SoundStorage Area	0Area1	●*4					●	●			
		2		1Area2	○*4					○	○			
	mC-Sound Sound Number	0	MelodySpeaker SoundNumber	0Number0	●*4					●	●			
		1		1Number1	○*4					○	○			
		2		2Number2	○*4					○	○			
		3		3Number3	○*4					○	○			
		4		4Number4	○*4					○	○			
		5		5Number5	○*4					○	○			
		6		6Number6	○*4					○	○			
		7		7Number7	○*4					○	○			
	mC-Sound Sound Volume	0(Mute)	MelodySpeaker SoundVolume	0Volume0	○*4					○	○			
		1		1Volume1	○*4					○	○			
		2(Low)		2Volume2	○*4					○	○			
		3		3Volume3	○*4					○	○			
		4		4Volume4	○*4					○	○			
		5		5Volume5	○*4					○	○			
		6(Medium)		6Volume6	●*4					●	●			
		7		7Volume7	○*4					○	○			
		8		8Volume8	○*4					○	○			
		9		9Volume9	○*4					○	○			
		10		10Volume10	○*4					○	○			
		11		11Volume11	○*4					○	○			
		12(High)		12Volume12	○*4					○	○			
		13		13Volume13	○*4					○	○			
		14		14Volume14	○*4					○	○			
	15	15Volume15	○*4					○	○					
	mC-Sound Repeat	1	MelodySpeaker Repeat	0Repeat1	●*4					●	●			
		2		1Repeat2	○*4					○	○			
		3		2Repeat3	○*4					○	○			
		4		3Repeat4	○*4					○	○			
5		4Repeat5		○*4					○	○				
6		5Repeat6		○*4					○	○				
7		6Repeat7		○*4					○	○				
8		7Repeat8		○*4					○	○				
9		8Repeat9		○*4					○	○				
10		9Repeat10		○*4					○	○				
Taken Sensor Control	Hold Print	Disable	TakenSensor HoldPrint	0Disable	○*5								○	
		Enable		1Enable	●*5								●	

*1 TSP143: TSP143IV-UE, TSP143IV-UE SK, TSP143IIIIW/LAN/BI/U, TSP100IIU

* ● is the default setting value.

*2 MCP31CI, MCP31CBI, MCP31L, MCP31LB, MCP31C, MCP31CB

*4 TSP143IV-UE, TSP143IV-UE SK only

*5 TSP143IV-UE SK only

5.1.2 Portable Printers

	Option Name		Command		Default setting value
	option	value	[option]	[value]	
Output Options	Print Quality(Speed)	Standard(High Speed)	PrintSpeed	0High	○
		High Quality(Low Speed)		1Low	
	Print Density	Special	PrintDensity	0Special	○
		High		1High	
		Medium		2Medium	
		Low		3Low	
	Page Type	Variable Length	PageType	0Variable	○
		Fixed Length		1Fixed	
		Black Mark		2BlackMark	
		Black Mark(FRONT)		3FrontBlackMark	
		Black Mark(BACK)		4BackBlackMark	
		Black Mark(Gap/Hole)		5GapHoleBlackMark	
		Black Mark(3inch)		6BlackMarkThreeInch	
Black Mark(2inch)		7BlackMarkTwoInch			
Black Mark(Center)		8BlackMarkCenter			
Label(Gap)		9Label			
Feed Options	Page Feed Type	No Feed	PageCutType	0NoCutPage	○
		Tear Bar		1TearBarPage	
	Document Feed Type	No Feed	DocCutType	0NoCutDoc	○
		Tear Bar		1TearBarDoc	
Data Treatment Recover From Error	Data Treatment Recover From Error	No Use	DataTreatmentRecoverFromError	0NoUse	○
		Clear Data By Document Unit		1ClearDataByDocument Unit	
Black Mark Detection	Black Mark Detection	Disable	BlackMarkDetection	1Disable	○
		Enable		2Enable	

5.1.3 Dot Matrix Printers

	Option Name		Command		Supported Model			
	option	value	[option]	[value]	SP712	SP717	SP742	SP747
Output Option	Bidirectional Printing	Bidirectional	BidiPrinting	0Bidirectional	●	●	●	●
		Unidirectional		1Unidirectional	○	○	○	○
	Page Type	Variable Length	PageType	0Variable	●	●	●	●
		Fixed Length		1Fixed	○	○	○	○
	Resolution	170 x 72 DPI	Resolution	170x72dpi	●	●	●	●
		85 x 72 DPI		85x72dpi	○	○	○	○
Cut Options (Cutter)	Page Cut Type	No Cut	PageCutType	0NoCutPage			●	●
		Partial Cut		1PartialCutPage			○	○
		Full Cut		2FullCutPage				
	Document Cut Type	No Cut	DocCutType	0NoCutDoc			○	○
		Partial Cut		1PartialCutDoc			●	●
		Full Cut		2FullCutDoc				
Feed Options (TearBar)	Page Feed Type	No Feed	PageCutType	0NoCutPage	●	●		
		Tear Bar		3TearBarPage	○	○		
	Document Feed Type	No Feed	DocCutType	0NoCutDoc	○	○		
		Tear Bar		3TearBarDoc	●	●		
Cash Drawer Control	Cash Drawer	Do Not Open Drawers	CashDrawerSetting	0DoNotOpenDrawers	●	●	●	●
		Open Drawer 1		1OpenDrawer1	○	○	○	○
		Open Drawer 2		2OpenDrawer2	○	○	○	○
		Open Drawer 1 and 2		3OpenDrawer3	○	○	○	○
	Cash Drawer 1 Pulsh Width	10 milliseconds	CashDrawer1PulseWidth	0Millis10	○	○	○	○
		100 milliseconds		1Millis100	○	○	○	○
		200 milliseconds		2Millis200	●	●	●	●
		300 milliseconds		3Millis300	○	○	○	○
		400 milliseconds		4Millis400	○	○	○	○
		500 milliseconds		5Millis500	○	○	○	○
		600 milliseconds		6Millis600	○	○	○	○
		700 milliseconds		7Millis700	○	○	○	○
		800 milliseconds		8Millis800	○	○	○	○
		900 milliseconds		9Millis900	○	○	○	○
		1000 milliseconds		10Millis1000	○	○	○	○
1100 milliseconds	11Millis1100	○	○	○	○			
1200 milliseconds	12Millis1200	○	○	○	○			
Data Treatment Recover From Error	Data Treatment Recover From Error	No Use	DataTreatment RecoverFrom Error	0NoUse	○	○	○	○
		Clear Data By Document Unit		1ClearDataBy DocumentUnit	●	●	●	●

* ● is the default setting value.

	Option Name		Command		Supported Model			
	option	value	[option]	[value]	SP712	SP717	SP742	SP747
Buzzer1 Control / Buzzer2 Control	Buzzer1 /	No Use	Buzzer1Setting /	0NoUse	●	●	●	●
	Buzzer2	Document Top	Buzzer2Setting	1DocumentTop	○	○	○	○
		Document Bottom		2DocumentBtm	○	○	○	○
	Buzzer1 - On Time /	20 milliseconds	Buzzer1OnTime / Buzzer2OnTime	0Millis20	●	●	●	●
	Buzzer2 - On Time	40 milliseconds		1Millis40	○	○	○	○
		100 milliseconds		2Millis100	○	○	○	○
		200 milliseconds		3Millis200	○	○	○	○
		500 milliseconds		4Millis500	○	○	○	○
		1000 milliseconds		5Millis1000	○	○	○	○
		2000 milliseconds		6Millis2000	○	○	○	○
		5000 milliseconds		7Millis5000	○	○	○	○
	Buzzer1 - Off Time /	20 milliseconds	Buzzer1OffTime / Buzzer2OffTime	0Millis20	●	●	●	●
	Buzzer2 - Off Time	40 milliseconds		1Millis40	○	○	○	○
		100 milliseconds		2Millis100	○	○	○	○
		200 milliseconds		3Millis200	○	○	○	○
		500 milliseconds		4Millis500	○	○	○	○
		1000 milliseconds		5Millis1000	○	○	○	○
		2000 milliseconds		6Millis2000	○	○	○	○
		5000 milliseconds		7Millis5000	○	○	○	○
	Buzzer1 - Repeat /	1	Buzzer1Repeat / Buzzer2Repeat	0Repeat1	●	●	●	●
	Buzzer2 - Repeat	2		1Repeat2	○	○	○	○
		3		2Repeat3	○	○	○	○
		5		3Repeat5	○	○	○	○
		10		4Repeat10	○	○	○	○
15		5Repeat15		○	○	○	○	
20		6Repeat20		○	○	○	○	

* ● is the default setting value.

5.1.4 Kiosk Printers

	Option Name		Command		Supported Model						
	option	value	[option]	[value]	SK1-211/221	SK1-211/221 presenter	SK1-311/321	SK1-311 presenter	SK1-41	SK1-41 presenter	SK5-31 presenter
Output Options	Print Density	Standard	PrintDensity	3ZERO	●	●	●	●	●	●	●
		+1		4Plus1	○	○	○	○	○	○	○
		+2		5Plus2	○	○	○	○	○	○	○
		+3		6Plus3	○	○	○	○	○	○	○
	Print Speed	250mm	PrintSpeed	0_250mm	●	●	●	●	●	●	
		220mm		1_220mm	○	○	○	○	○	○	
		200mm		2_200mm	○	○	○	○	○	○	
		190mm		3_190mm	○	○	○	○	○	○	
		170mm		4_170mm	○	○	○	○	○	○	
		150mm		5_150mm	○	○	○	○	○	○	●
		130mm		6_130mm	○	○	○	○	○	○	○
		110mm		7_110mm	○	○	○	○	○	○	○
	Page Type	Variable Length	PageType	0Variable	●	●	●	●	●	●	●
		Fixed Length		1Fixed	○	○	○	○	○	○	○
Black Mark		2BlackMark		○	○	○	○	○	○	○	
Label		9Label		○		○		○			
Mark Detection	MarkDetection	Disable	BlackMark Detection	1Disable	●	●	●	●	●	●	
		Enable		2Enable	○	○	○	○	○	○	
Cut Options	Cut Type	Full Cut All Pages	CutType	0FullCutAllPages		●		●		●	●
		Full Cut Last Pages		1FullCutLastPages		○		○		○	○
	Page Cut Type	No Cut	PageCutType	0NoCutPage	●		●		●		
		Partial Cut		1PartialCutPage	○		○		○		
		Full Cut		2FullCutPage	○		○		○		
	Document Cut Type	No Cut	DocCutType	0NoCutDoc	○		○		○		
		Partial Cut		1PartialCutDoc	●		●		●		
Full Cut		2FullCutDoc		○		○		○			
Bezel Control (Optional)	Bezel Hold Print	Disable	BezelHoldPrint	0Disable	●		●				●
		Enable		1Enable	○		○				○
Presenter Control	Presenter Action	Loop - Hold - Retract	Presenter Action	0LoopHoldRetract		●		●		●	●
		Loop - Hold - Eject		1LoopHoldEject		○		○		○	○
		No Loop - Hold - Retract		2NoLoopHold Retract		○		○		○	○
		No Loop - Hold - Eject		3NoLoopHoldEject		○		○		○	○
		No Loop - No Hold - Eject		4NoLoopNoHold Eject		○		○		○	○
	Presenter Timeout	Do Not Timeout	Presenter Timeout	0DoNotTimeout		●		●		●	●
		10 seconds		1Timeout10sec		○		○		○	○
		20 seconds		2Timeout20sec		○		○		○	○
		30 seconds		3Timeout30sec		○		○		○	○
		40 seconds		4Timeout40sec		○		○		○	○
		50 seconds		5Timeout50sec		○		○		○	○
		60 seconds		6Timeout60sec		○		○		○	○
		70 seconds		7Timeout70sec		○		○		○	○
		80 seconds		8Timeout80sec		○		○		○	○
		90 seconds		9Timeout90sec		○		○		○	○
		100 seconds		10Timeout100sec		○		○		○	○
		110 seconds		11Timeout110sec		○		○		○	○
		120 seconds		12Timeout120sec		○		○		○	○

	Option Name		Command		Supported Model							
	option	value	[option]	[value]	SK1-211/221	SK1-211/221 presenter	SK1-311/321	SK1-311 presenter	SK1-41	SK1-41 presenter	SK5-31 presenter	
LED Control (Optional)	LED Control	Disable	LEDControl	0Disable	●	●	●	●			●	
		Printing		1PrintingLEDEnable	○	○	○	○			○	
		Error		2ErrorLEDEnable	○	○	○	○			○	
		Printing + Error		3PrintingAndErrorLEDEnable	○	○	○	○			○	
		Printing + Error + Idle		4PrintingAndErrorAndIdleLEDEnable	○	○	○	○			○	
	Printing LED Interval	Default (100 millisecc)	Printing LEDInterval	0PrintingLEDDefault	●	●	●	●			●	
		200 millisecc		1PrintingLED200milliseconds	○	○	○	○			○	
		500 millisecc		2PrintingLED500milliseconds	○	○	○	○			○	
		1000 millisecc		3PrintingLED1000milliseconds	○	○	○	○			○	
	Error LED Interval	Default (100 millisecc)	Error LEDInterval	0ErrorLEDDefault	●	●	●	●			●	
		200 millisecc		1ErrorLED200milliseconds	○	○	○	○			○	
		500 millisecc		2ErrorLED500milliseconds	○	○	○	○			○	
		1000 millisecc		3ErrorLED1000milliseconds	○	○	○	○			○	
	Idle LED Interval	Default (Always On)	Idle LEDInterval	0IdleLEDDefault	●	●	●	●			●	
		100 millisecc		1IdleLED100milliseconds	○	○	○	○			○	
		200 millisecc		2IdleLED200milliseconds	○	○	○	○			○	
		500 millisecc		3IdleLED500milliseconds	○	○	○	○			○	
		1000 millisecc		4IdleLED1000milliseconds	○	○	○	○			○	
	Data Treatment Recover From Error	DataTreatmentRecoverFromError	No Use	Data Treatment RecoverFromError	0NoUse	○	○	○	○	○	○	○
			Clear Data By Document Unit		1ClearDataByDocumentUnit	●	●	●	●	●	●	●

6. Confirmed Operating Environments

macOS 13, macOS 12, macOS 11, Mac OS X 10.15, Mac OS X 10.14

- iMac (Mid 2017)
- Mac mini (Late 2014)
- MacBook Air (M1, 2020)

7. Revision History

Rev. No.	Date	Content
Rev. 1.0	Jan, 2009	New release.
Rev. 2.0	Jun, 2009	Error correction.
Rev. 3.0	Mar. 2010	Added a new model "TSP800II".
Rev. 4.0	Sep. 2010	Added support for Star cups Driver 3.2.0. Added support for new models of 'Data Treatment Recover From Error Command' and 'Buzzer Command'.
Rev. 5.0	Feb. 2013	Added a new model "TSP654II". Added support for Mac OS X 10.7, Mac OS X 10.8.
Rev. 5.1	May 2013	Error correction.
Rev. 6.0	Jan. 2015	Added support for Bluetooth.
Rev. 6.1	Jun. 2016	Added new models TSP100IIIW / LAN / BI. Added support for Mac OS X 10.11
Rev. 6.2	Oct. 2016	Added support Star Cloud Services Added support for Mac OS X 10.12. Mac OS X 10.5 to 10.8 end of support.
Rev. 6.3	Mar. 2017	Added new models TSP100IIIU and mPOP.
Rev. 6.4	May 2017	Added support for Micro Receipt function of Star Cloud Services
Rev. 6.5	Jun. 2018	Added new models mC-Print3 and mC-Print2. Mac OS X 10.9 end of support.
Rev. 6.6	Nov. 2018	Added support for macOS 10.14. mC-Sound is supported.
Rev. 6.7	Jul. 2019	Added a new model MCP30 (mC-Print3 series).
Rev. 7.0	Dec. 2019	Added support for macOS 10.15. Mac OS X 10.10 end of support. Integrate manuals (Thermal Printers, FVP10, Portable Printers and Dot Matrix Printers) Added a new model SK1 series and SK1 Presenter series.
Rev. 7.1	May 2020	MCP31C and MCP31CB (mC-Print3 series) are supported.
Rev. 7.2	Oct. 2021	TSP143IV-UE is supported. Added support for macOS 11, Mac OS X 10.11 end of support.
Rev. 7.3	Mar. 2022	POP10CI is supported.
Rev. 7.4	Oct. 2022	mC-Label3 is supported. Added support for macOS 12 / 13. Mac OS X 10.12 / 10.13 end of support. End of support TSP143U, TSP143GT, TSP143LAN, FVP10, SM-S220i and SM-T300.
Rev. 7.5	Aug. 2023	TSP143IV-UE SK is supported. SK1-41, SK1-41 presenter and SK5-31 presenter are supported.
Rev. 7.6	Nov. 2023	MCP31CI and MCP31CBI are supported.
Rev. 7.7	Feb. 2024	POP10CBI is supported.

star 

URL: <https://www.star-m.jp/eng>